



# Beyond the Gardens

## Ramat Hanadiv reaches out

Tamar Arbel Elisha





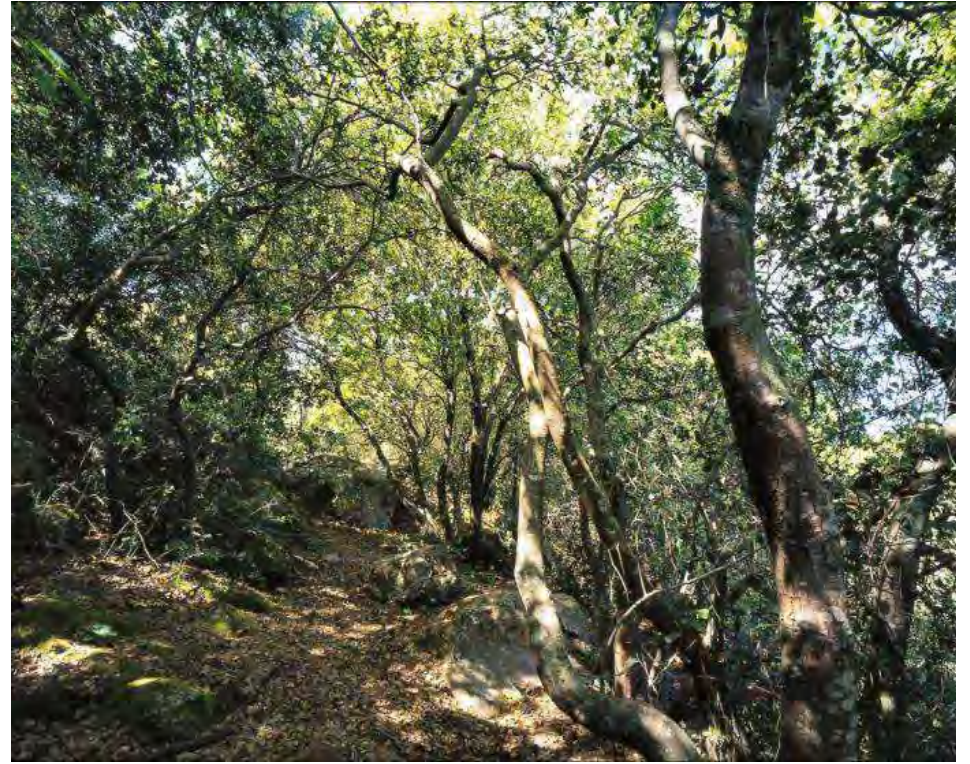


© 2015 ORION-ME  
© 2015 Google  
US Dept of State Geographer  
Image Landsat





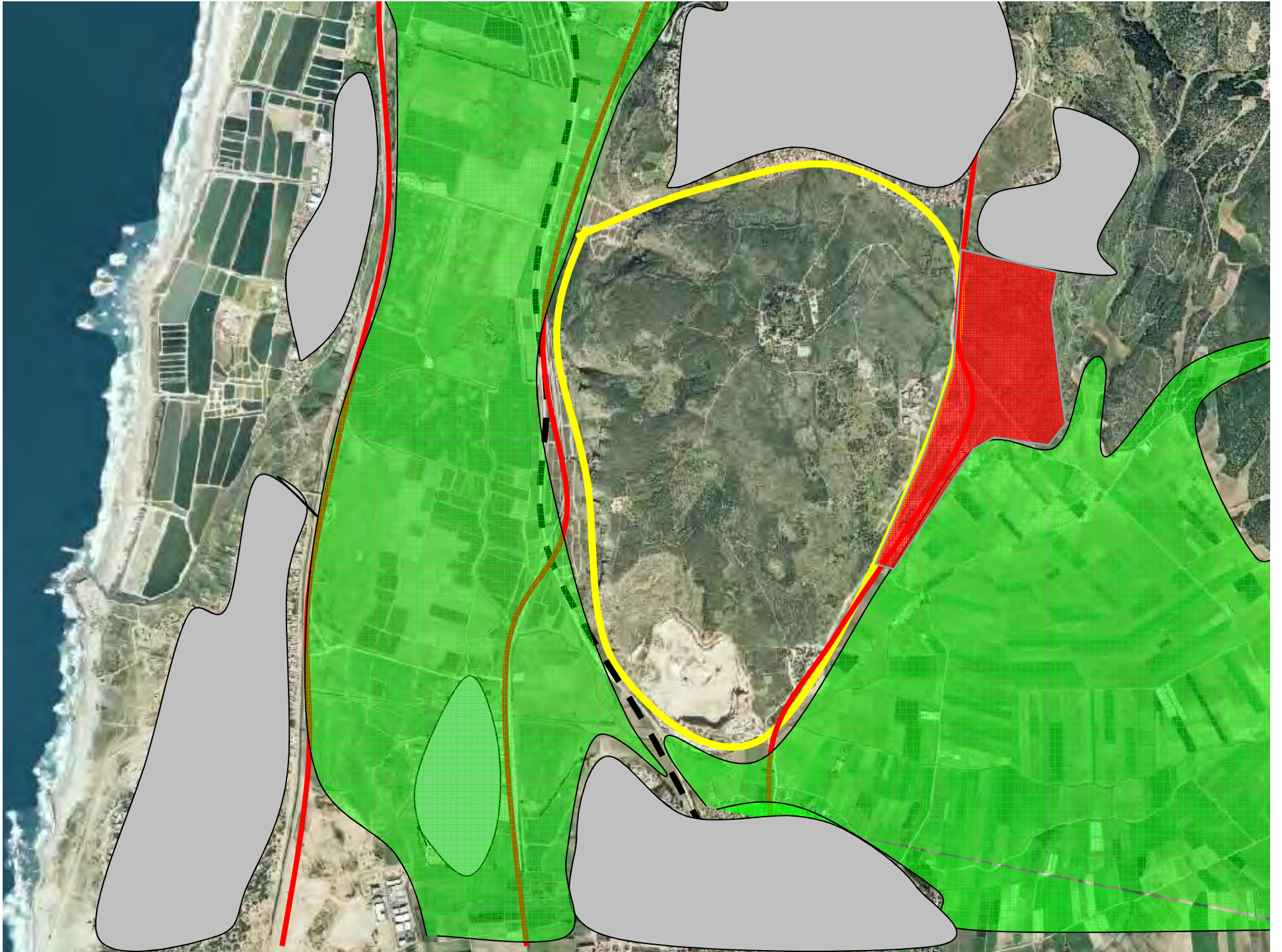














2012

Community



# Strategic Line - Evolution

**2012**

**Affinity**

**2013**

**Supporting  
Sustainability**

**2014**

**Initiative  
Community**



# Strategic Line

**2012**

**Affinity**







# Strategic Line

**2012**

**Affinity**

**2013**

**Supporting  
Sustainability**



# Examples

- 1. *Connect* – Eco pass Project**
- 2. Rehabilitating the quarry  
Participatory Process**



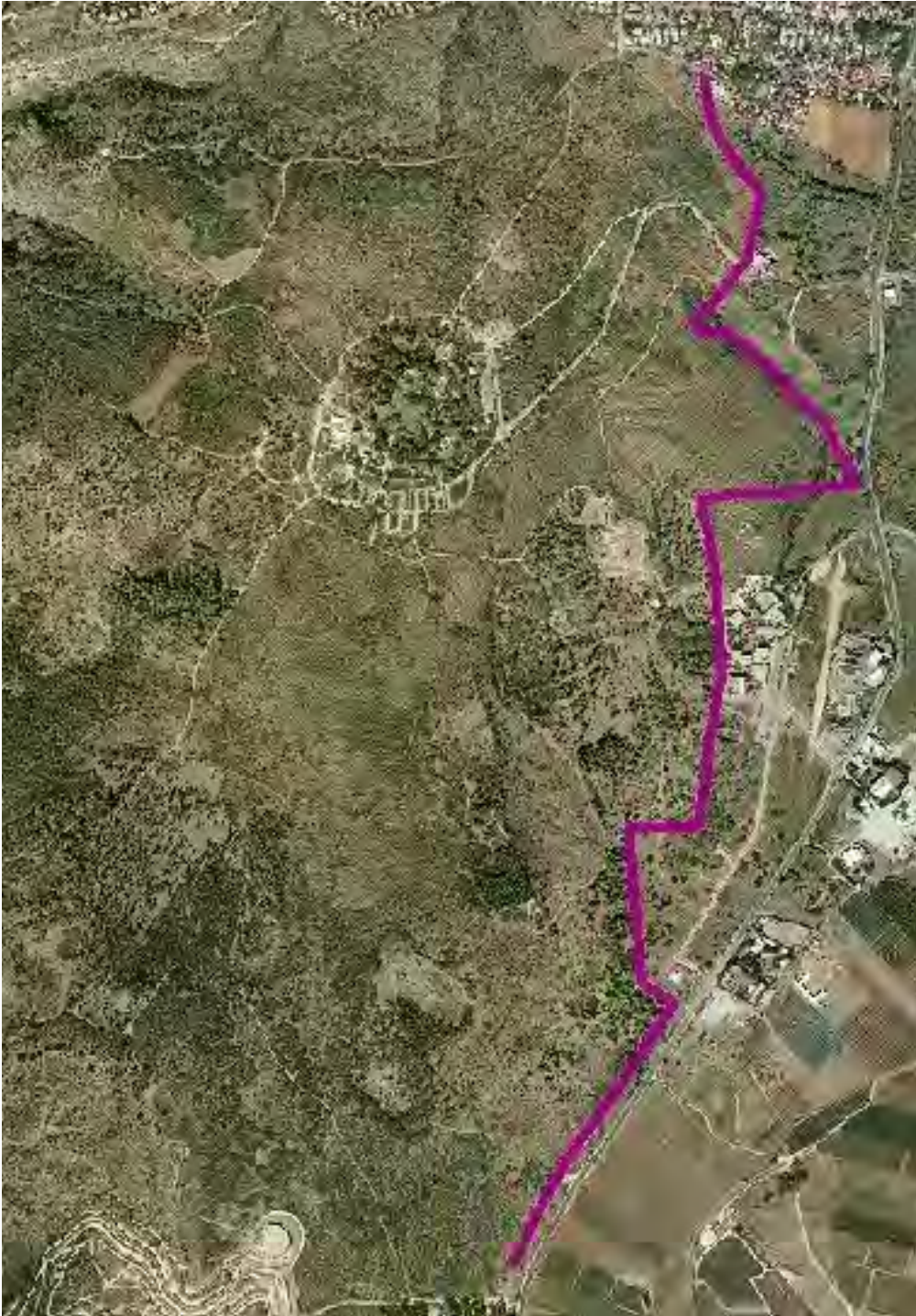












# Research

Who?

Where?

Difference between species





**Bushnell**

12-28-2012 21:48:28



**What the future holds?**





Porcupine



Jackal



Yellow necked Mouse



Gazelle



Roe deer



*Archon apollinus*



Sheltopusik



European badger



*Alectoris*





Porcupine



Jackal



Yellow necked Mouse



Gazelle



Roe deer



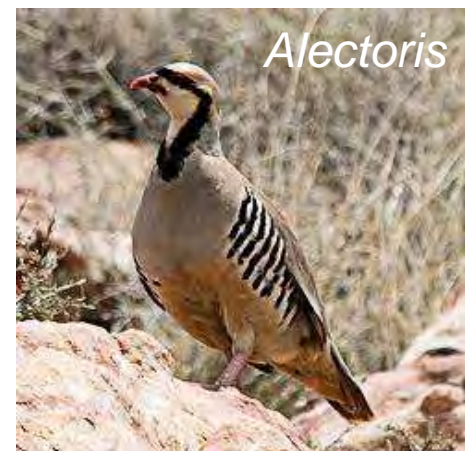
*Archon apollinus*



Sheltopusik



European badger



*Alectoris*



# Meeting with the Decision Makers



# Connect











Bushnell  
M Camera Name 29.42



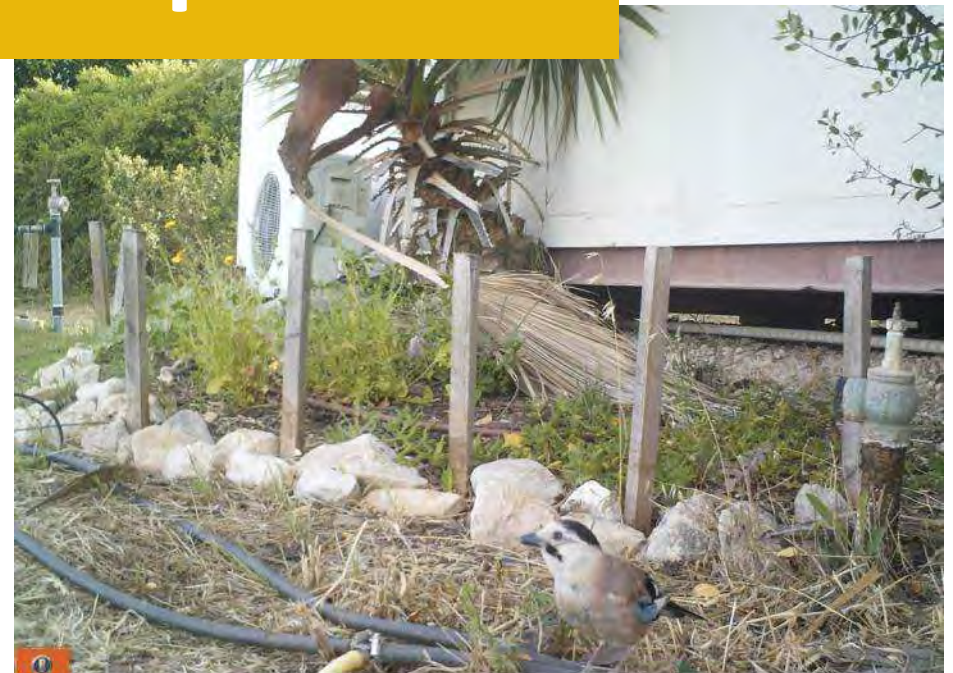
06-08-2014 11:55:53

# Camera Traps



Bushnell  
M Camera Name 29.42In 63F

06-03-2014 03:02:19



Bushnell  
M Camera Name 29.28In 80F

05-27-2014 17:41:59



# Sand Boxes



















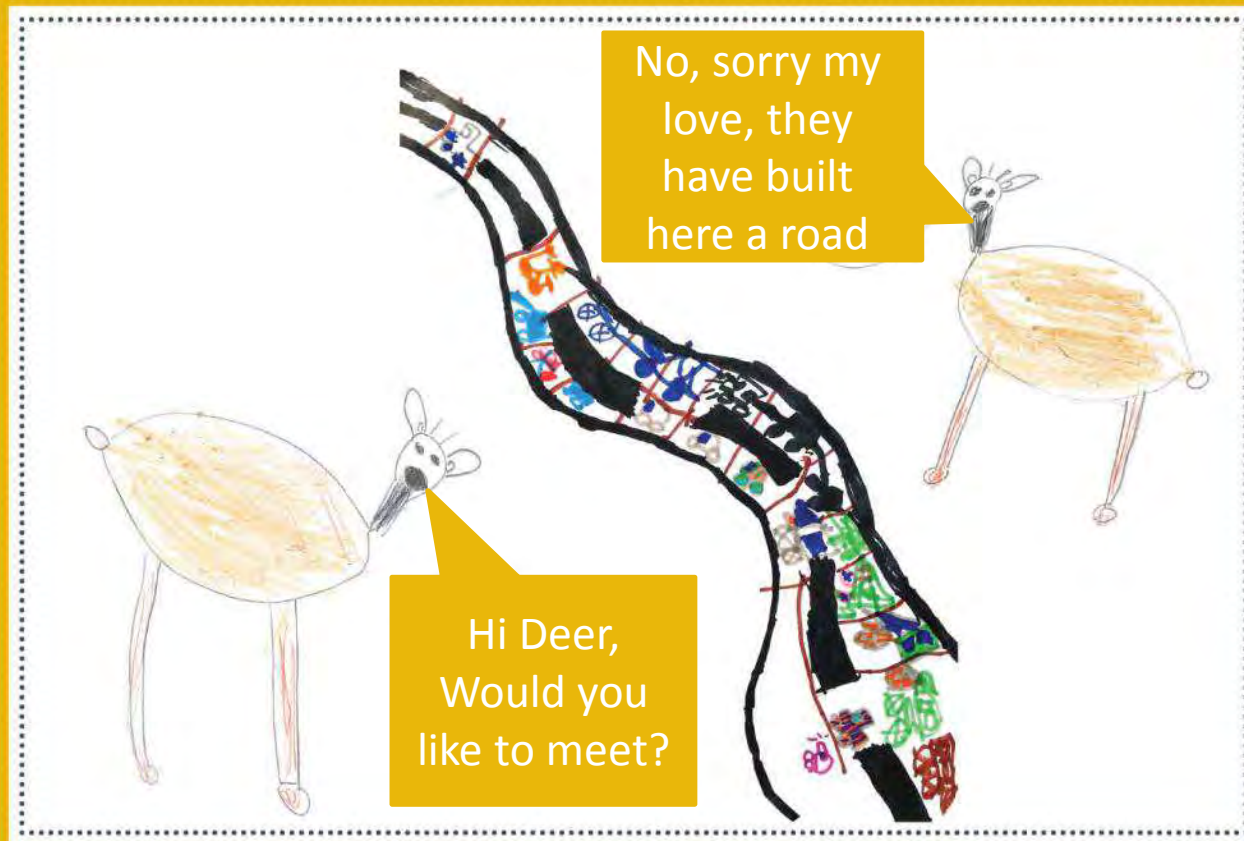






# מעברים מצילי בעלי חיים

תכנית סביבתית עם ילדי גנים



כתה א', בייס בראשית, בנימינה







# Quarry Public Participation Process



**רמת הנדיב**  
Ramat Hanadiv رמת هندیف



**המועצה המקומית  
בנימינה-גבעת עדה**  
Binyamina-Givat Ada Local Council



# Goals

- 1.To develop ideas for rehabilitating the abandoned quarry in Binyamina**
- 2.To connect the community to the place and it's heritage**



# Guided Tours





A child's drawing of a landscape. In the center is a blue pond with wavy lines representing water. It is surrounded by green trees and bushes. A red path or stream flows through the scene. On the left, there is a white, cloud-like shape with a black dot. The background is brown and grey, suggesting a quarry or rocky terrain.

# Dream Sessions

Yonatan, Itamar, Noam, and Eshel, Hanadiv School

Preserve nature, there should be an observation point; we should be able to bike ride. There should be a bridge suspended from both sides of the quarry, there should be a museum that tells the history of the quarry, rappelling, a fish pool without fishing and the gazelles should be returned to nature. In our plan, the paths are shaped like deer and the museum is at the head...



# Writing wishes during the “Binyamina March”





- Skate Park
- Bike Park
- Swimming Pool
- Disney Land
- Amphitheatre
- Mall
- Soccer Field
- Extreme Park
- Rather stay as a Green Reserve







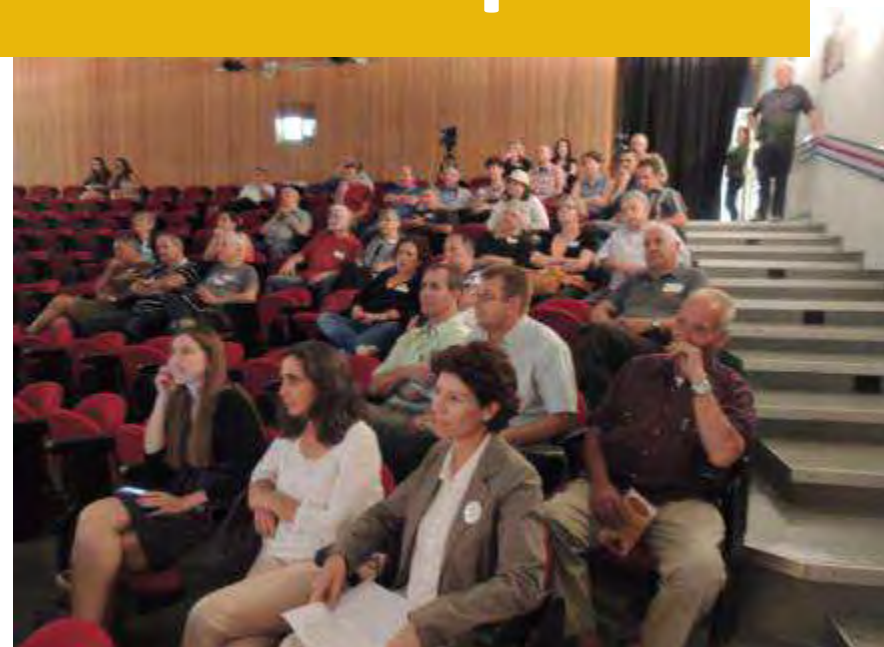
## Guided Tour with the planning team







# Round Tables Workshop





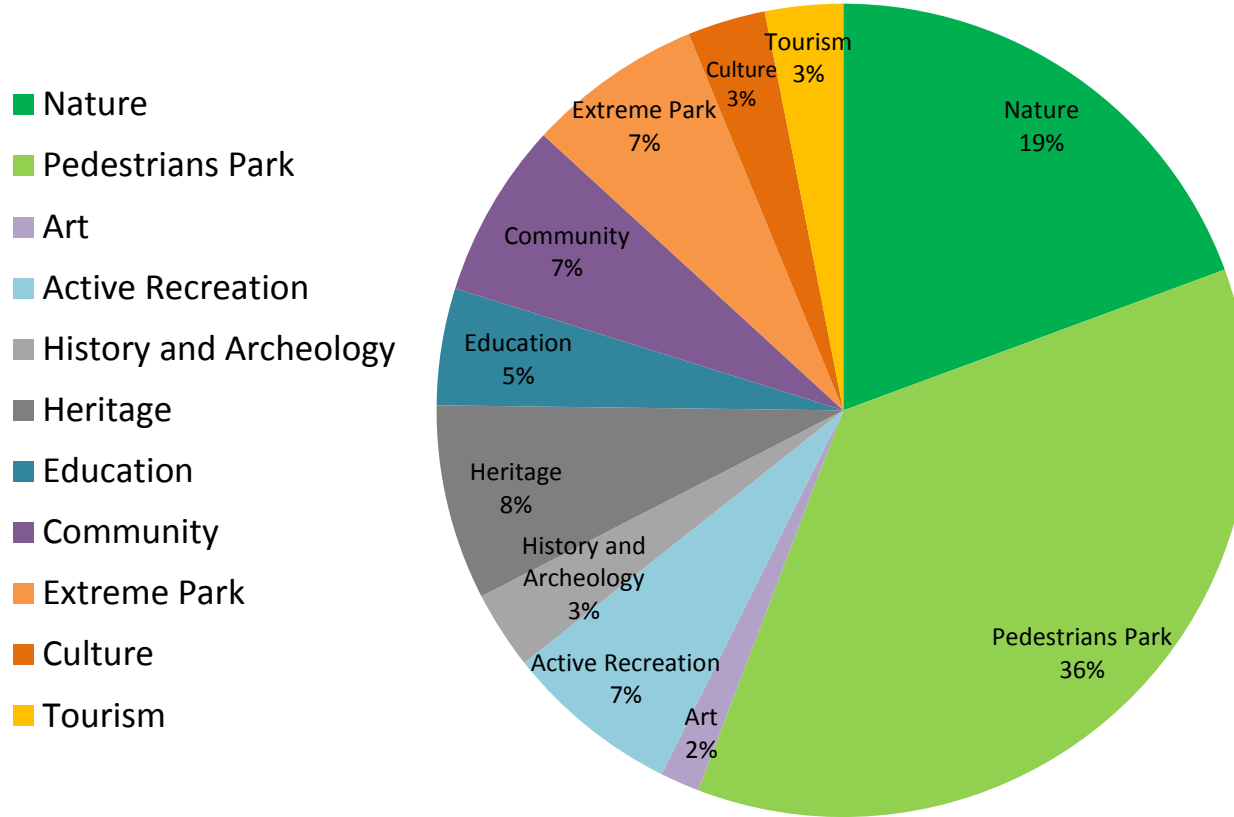


# Planning Workshop





# Wishes that Suit the Zoning (%)





# Evaluate the Concepts

Criteria/Theme	In Alignment with Sustainability Values	Allows Multiple and continue uses	Serves the Community	Enables and Open Options
Recreation and Sport Park				
Environmental Education Center				
Nature Park				
Man and Nature Park				
Entertainment Venue for Large Audiences				
Environmental Art Center				
Quarrying Heritage Center				

Legend	
A little	
Moderate	
Very Much	



# The Steering Committee Meeting reaches a common vision

The park will serve the community for purposes of enjoyment, interest, and inspiration, while raising awareness regarding the relationship between man and the environment, heritage, and future.

The site will serve as a link between values related to nature, landscape, and heritage in the surrounding area, incorporate community activity and offer a meeting place to a variety of people and cultures.









Website

Volunteer

**The Quarry**

[Link to website](#)

The Lesser  
Kestrel Project

Horticultural  
Therapy

Film on RH  
Volunteers

## Optual

cess were  
different  
number of  
s...

[Read More >](#)



## Planning Workshop

On Wednesday 2/10/13, Ramat Hanadiv hosted a Planning Workshop to develop the central concept for the rehabilitation of the Binyamina Quarry. This concept was...

[Read More >](#)



## Touring and Dreaming

Students from Binyamina's three elementary schools toured the quarry. During the visits the students learned about the history of the site, its importance to...

[Read More >](#)



## Binyan

Ramat H  
Binyamin  
important  
in the fut  
Quarry...





Facebook

Link to FB  
group  
page





# Strategic Line

**2012**

**Affinity**

**2013**

**Supporting  
Sustainability**

**2014**

**Initiative  
Community**



רמת הנדיב מזמינה את הקהילה באזור להציע הצעות למיזמים סביבתיים-קהילתיים שמטרתם לקדם את נושא הקיימות ולחזק את הקשר בין הקהילה לסביבה, תוך יצירת חיבור בין קהילות.



## Call for Proposals *Environment Builds Community*

זכרון יעקב, בנימינה - גבעת-עדה, יישובי אלונה,  
ג'אסר אלזרקא, בית חנניה ומעגן מיכאל.  
אנשים פרטיים המעוניינים להציע רעיונות,  
מוזמנים לחבור לארגונים אלה.



ערב חשיפה יתקיים ביום שני 26.2.15  
בשעה 19:00, בכיתות הלימוד במרכז המבקרים, רמת הנדיב.  
טפסי הרשמה ניתן להוריד מאתר רמת הנדיב:  
[www.ramathanadiv.org.il](http://www.ramathanadiv.org.il)  
פרטים והרשמה: תמר ארבל-אלישע, מנהלת תחום קהילה:  
[tamar@ramathanadiv.org.il](mailto:tamar@ramathanadiv.org.il), 04-6298106





Nursery@Quarry      **Community Fly**

**Backyard2Frontyard**

**Wild Gardens**

**Edible Forests      Healthy Food**

**Arab Women Photograph Their Environment**

**Living Our Stream      Legacy Trees**

**Communal Gardens**

**Documenting Memories**



**Thank  
You**

**[tamar@ramathanadiv.org.il](mailto:tamar@ramathanadiv.org.il)**