

# Look at the climate collages on your table and think about the following questions

## Gardens

Do these images remind you of anything that you do or have seen others do?



Composting



Gardening and learning together



Using raised beds



Growing native plants



Soil testing



Keeping a rain garden



Seed-saving



Partying & performing in the garden



Using rain barrels



Sharing the harvest



Maintaining butterfly habitat



Volunteering in a community garden

- What things represented in the images do you do or have you seen others do?
- How about people in the communities your Garden serves?
- What images would you add to use this with those communities?
- What community assets or challenges do they represent?



# *CONNECT* COMMUNITY+CLIMATE+ACTION

---

Botanic Garden Conservation International  
St. Louis, MO  
April 27-May 1, 2015

# Connect Presenters



Susan Ask  
Ecologist & Founder  
Animalia Project



Jennifer Hirsch, PhD  
Cultural Anthropologist  
Community Sustainability Specialist



Jennifer Schwarz Ballard, PhD  
Associate Vice President, Education  
Chicago Botanic Garden



Katie Larson  
Education Manager  
Alliance for the Great Lakes

# Program

- Overview of the challenge and our approach
- Community asset mapping activity
- Project Planning
  - Approach overview
  - Case study example: Alliance for the Great Lakes and Michigan City (Indiana) Area Schools
  - Project planning activity
- Overview of current and future tools for asset based project development and implementation
- Wrap-up

# State of climate change education & action

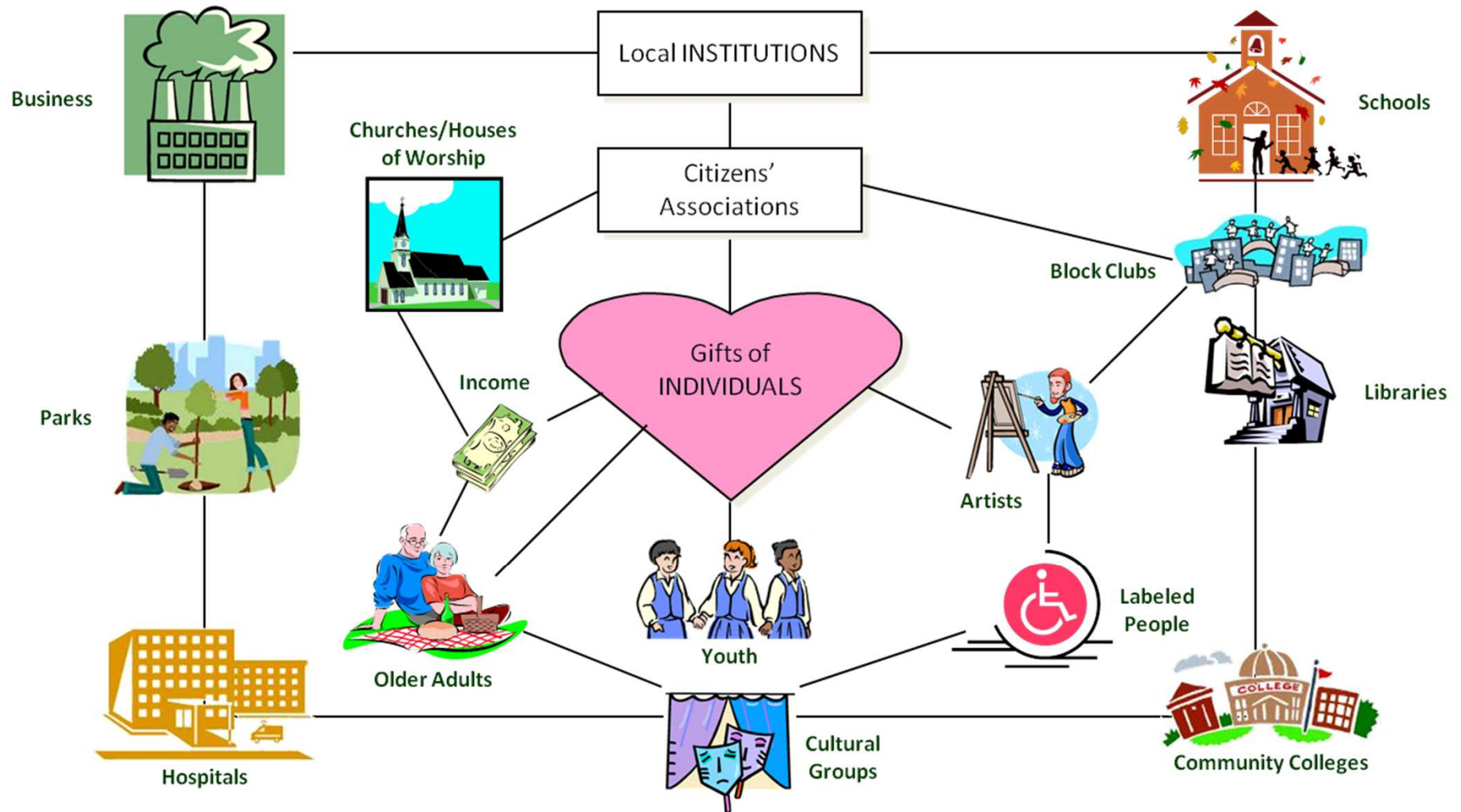
## The Issue

- Scientific
- Long-term
- Abstract
- Variable
- Contentious
- Requires behavior change and widespread engagement
- Intimidating

## The (common) Approach

- Scientific
- Unconnected to everyday concerns
- Deficit-based
- Guilt-inducing

# A New Approach: Asset-based Community Development



# Connect...Community+Climate+Action

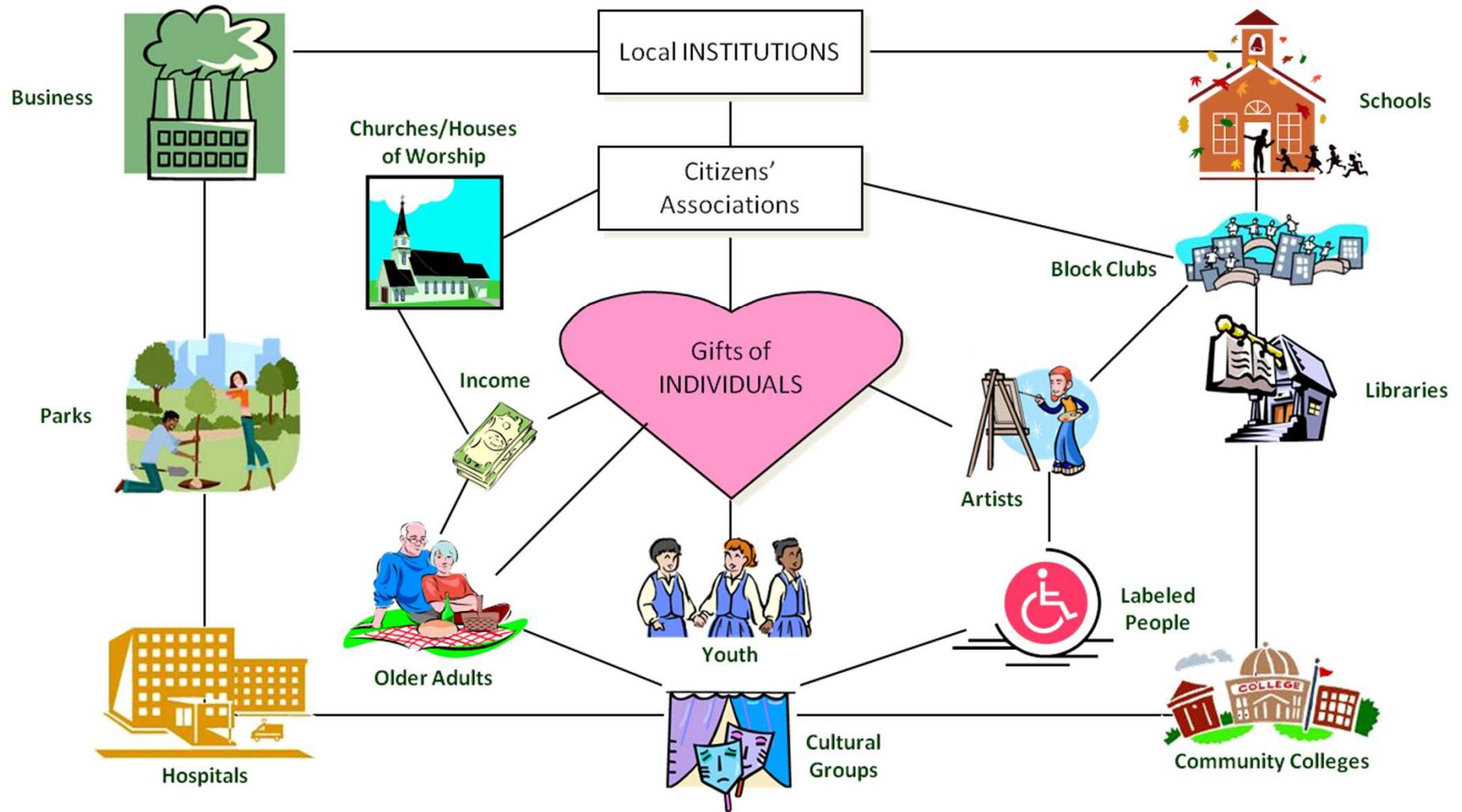
## Goal

*Increase knowledge, leadership, and engagement in climate action among diverse communities by building on local assets to connect community life to climate change and climate action.*

## Approach

- Create community-conservation partnerships
- Provide training in climate science & local impacts, communicating about climate change, and asset-based community engagement
- Support project implementation and documentation
- Create tools and case studies for use by others

# Identifying Assets



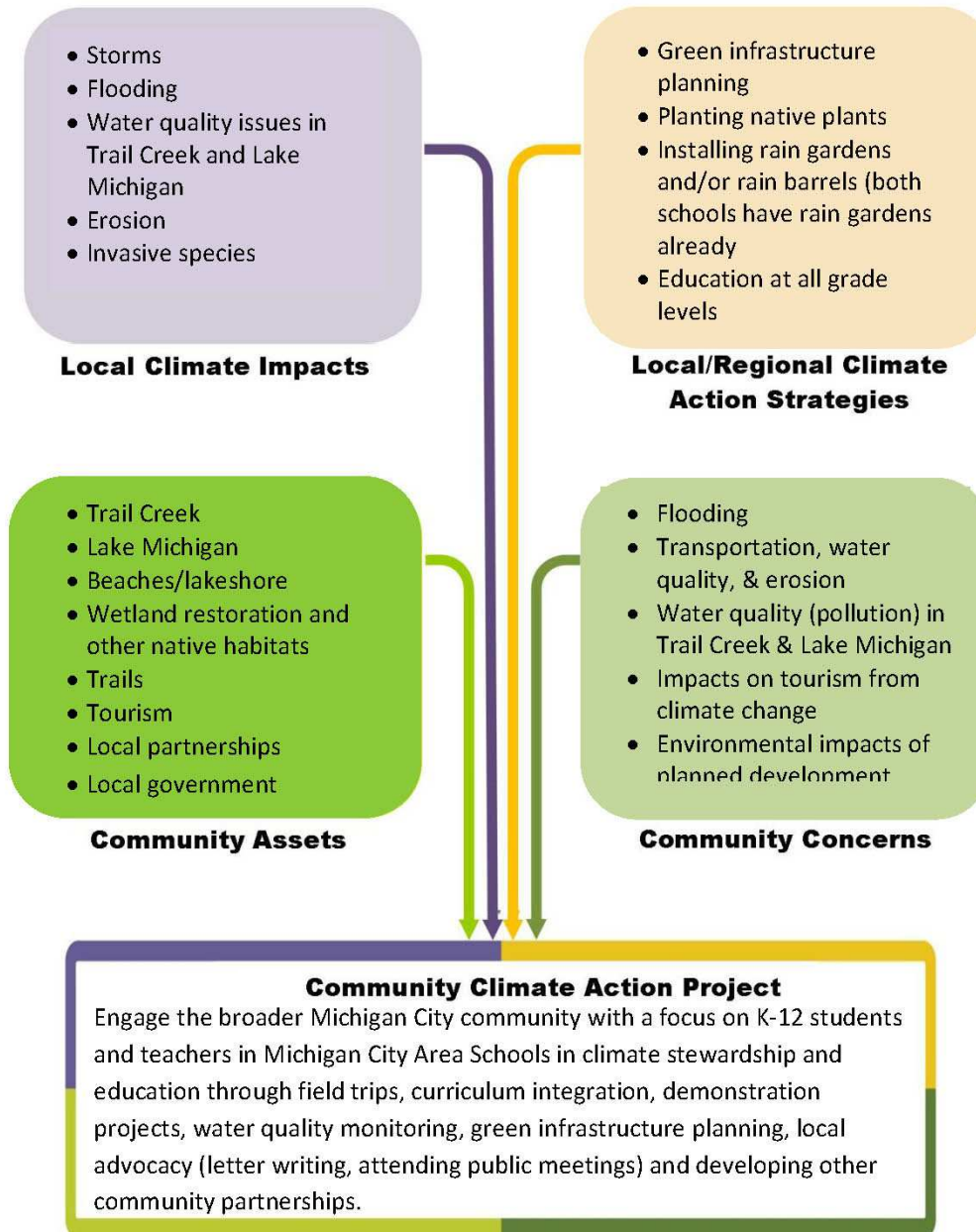
# PROJECT APPROACH DIAGRAM

Team: \_\_\_\_\_



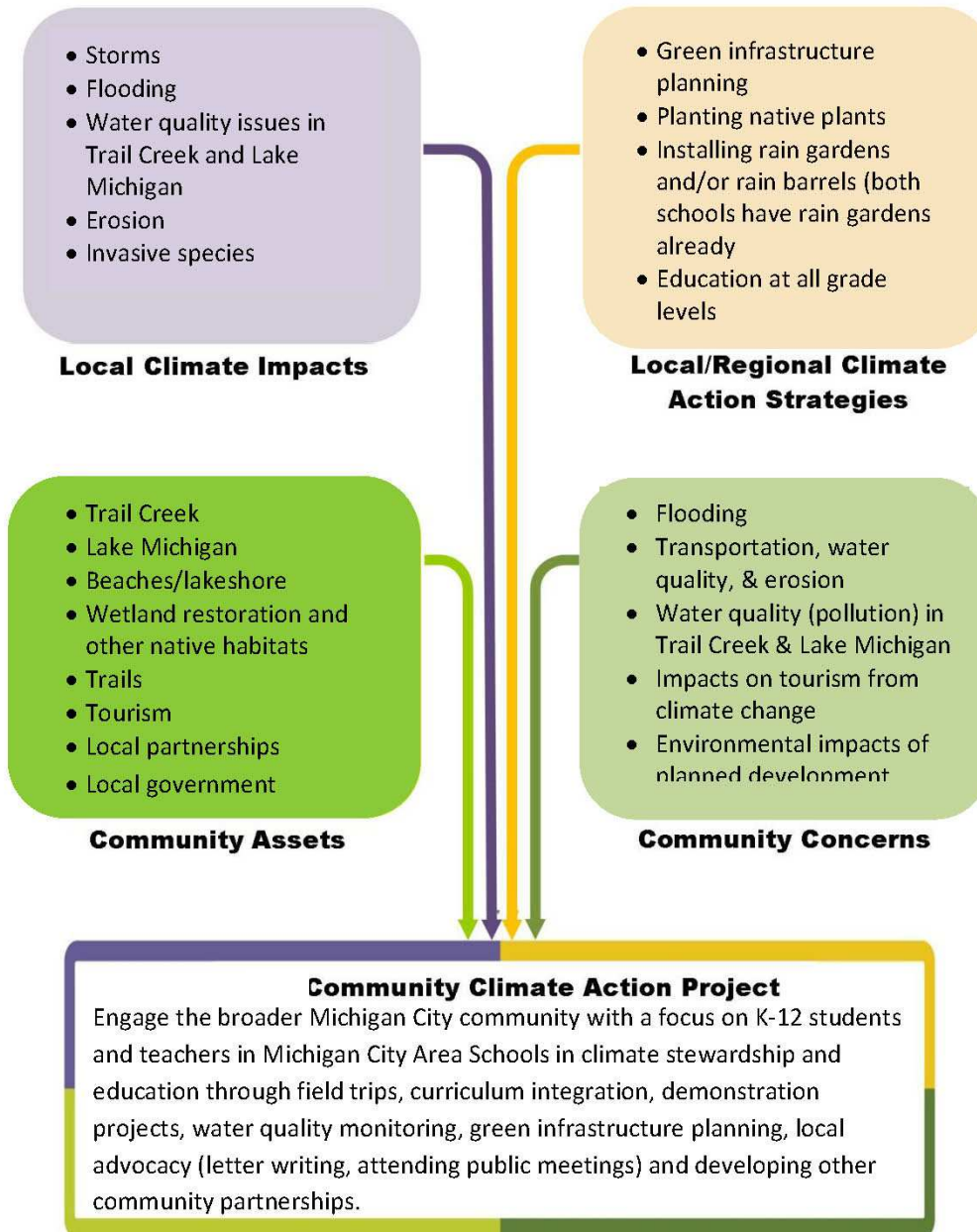
## PROJECT APPROACH DIAGRAM

**Team:** Michigan City Area Schools & Alliance for the Great Lakes



## PROJECT APPROACH DIAGRAM

**Team:** Michigan City Area Schools & Alliance for the Great Lakes



## Connect PROJECT APPROACH DIAGRAM

BGCI workshop brainstorming

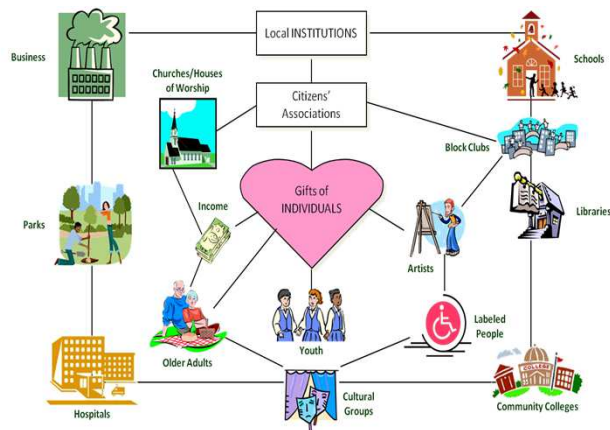


# Connect Tools Available Now: [animaliaproject.org/c3i](http://animaliaproject.org/c3i)

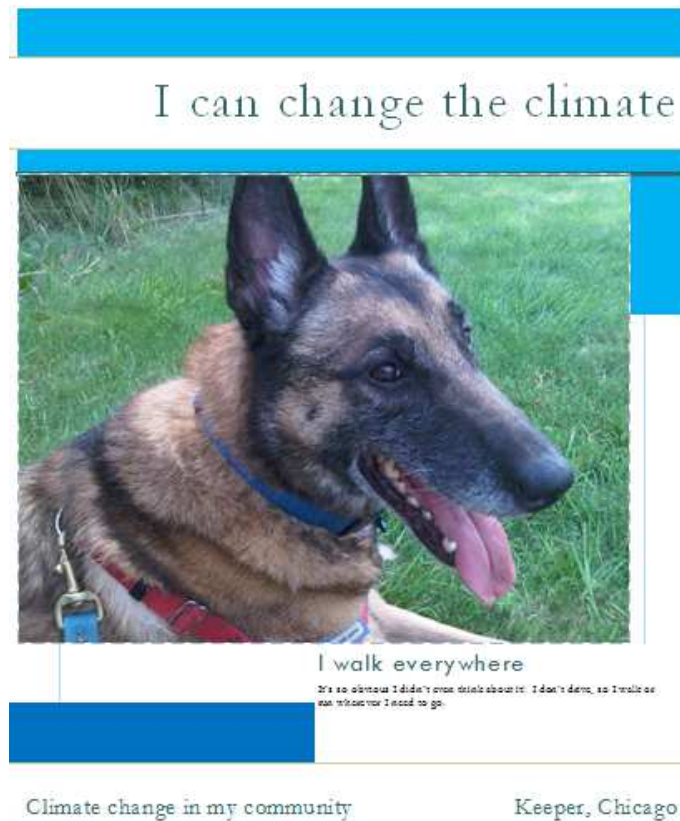
## Create Your Own Visual Collages



## Identify Community Assets



## Profiles of Climate Change: Conversation Guide & Poster Campaign



# Connect Tools in Development – Sign Up for Notifications

CATEGORY:	TOOLS
<b><i>Planning</i></b>	Guide to creating community-based climate action plans & projects
<b><i>Phenology</i></b>	Project Budburst: online guide connecting plant monitoring to community action
<b><i>Community &amp; Climate 101</i></b>	Climate Jeopardy; More or Less game; Principles of Community Climate Action
<b><i>Community-based Climate Impacts</i></b>	2-pagers: flooding/stormwater, gardens/plants/yards, phenology
<b><i>Storytelling</i></b>	Video Stories, Migration Stories
<b><i>Evaluating for Community &amp; Climate Outcomes</i></b>	Framework & Primer

# Other Community-based Climate Action Toolkits



## Chicago Community Climate Action Toolkit

### NEIGHBORHOOD CLIMATE ACTION TOOLKIT

*An Assets-Based Approach to Building Thriving and Healthy Neighborhoods in Cleveland*

People power is the answer to true and lasting climate action in Cleveland. This means that a citizen-centered approach is needed to align climate action with the assets, capacities and priorities of Cleveland residents.



## Cleveland Neighborhood Climate Action Toolkit



## Climate Change Curriculum

### Climate Change in My Backyard

With support from [NASA](#), and in collaboration with the National Ecological Observatory Network ([NEON](#)) and schools and teachers throughout Illinois, the Chicago Botanic Garden has developed the Climate Change in My Backyard curriculum series. The project targets grades 5 to 12.



## Climate Change in My Backyard

## 3-2-1 Reflect

3

What are 3 assets in your community that you want to think more about – including some you hadn't thought of before?

2

Who are 2 people in your community that you want to connect with to continue brainstorming assets?

1

What is your 1 big takeaway from this session – and how can you act on it in the next month?

# Thank you!

Download this presentation  
and existing tools at:

[animaliaproject.org/c3i](http://animaliaproject.org/c3i)



### C3I Community Climate Action Project

Engage the broader Michigan City community with a focus on K-12 students and teachers in Michigan City Area Schools in climate stewardship and education through field trips, curriculum integration, demonstration projects, water quality monitoring, green infrastructure planning, local advocacy (letter writing, attending public meetings) and developing other community partnerships.

### PROJECT APPROACH DIAGRAM

**Team:** Michigan City Area Schools & Alliance for the Great Lakes

