

A revision of the Malagasy endemic *Homalium* sect. *Nisa* (Salicaceae)

Presented by: Anna Wasse¹, Wendy Applequist²

¹Emory University, ²Missouri Botanical Garden

Contact: acwasse@emory.edu

Introduction

- *Homalium* is a genus of pantropical woody plants in the willow family (Salicaceae)
- Madagascar has many endemic species and is a center of diversity for *Homalium*
- Section *Nisa* is endemic to Madagascar distinguished by its solitary stamens per petal, sepals longer than petals, and large, persistent bracts.
- The most recent revision of sect. *Nisa* consisted of *H. nudiflorum* (var. *nudiflorum* and var. *ciliolatum*), *louvelianum*, *stelliferum*, and *intercedens* with the main focus of this project on the *H. nudiflorum* complex
- Due to new material collected since the last revision, it is necessary to reevaluate this section.

Materials and Methods

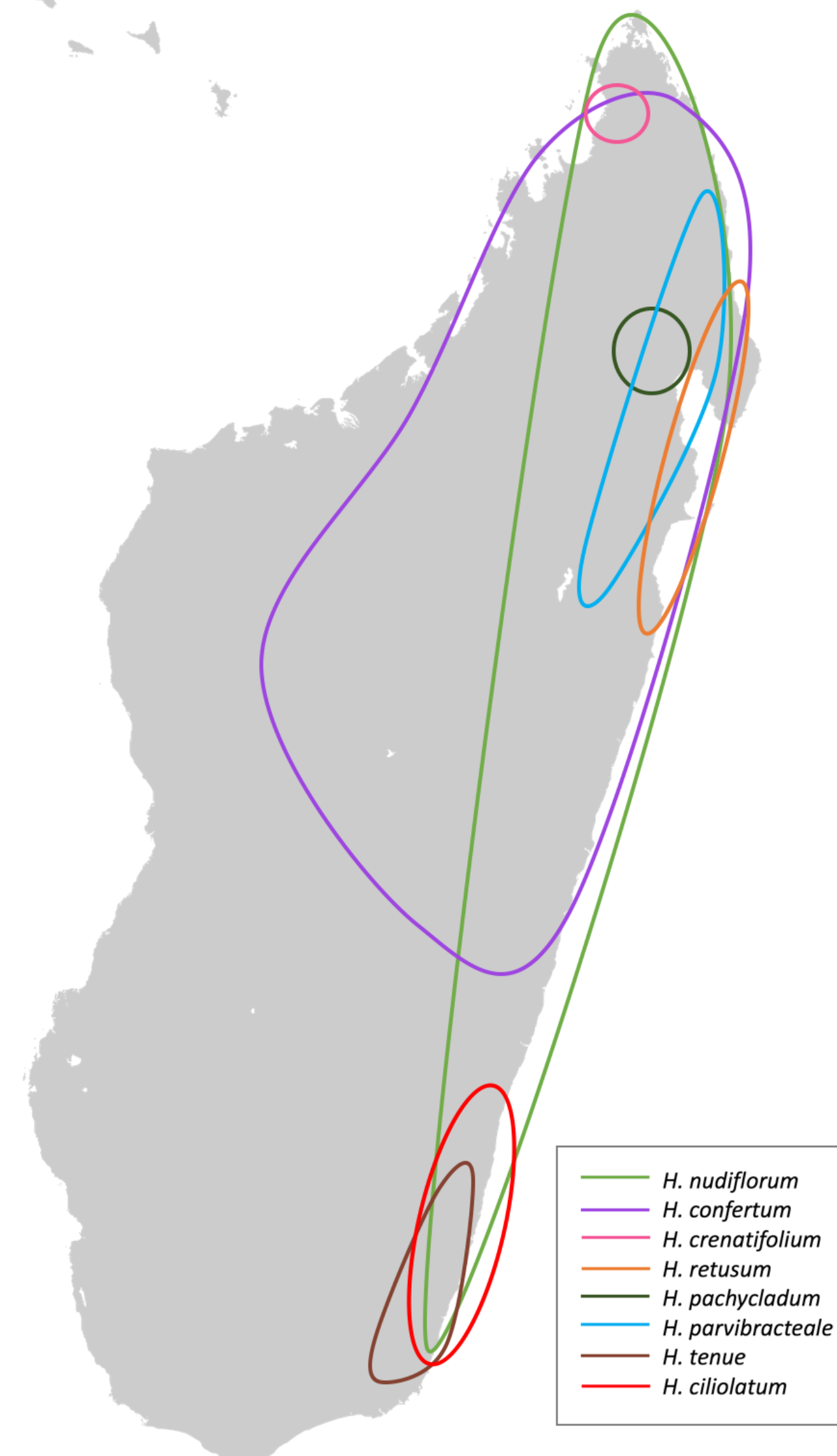
Material examined includes:

- 67 specimens from the *Homalium nudiflorum* complex from MO
- Over 30 additional specimens from sect. *Nisa*, including one on loan from P
- Pictures online from JSTOR Global Plants and the Muséum National D'histoire Naturelle



Specimens were organized first by region then by morphological characteristics including: leaf size, shape, and margin; indument of sepals and petals; flower size, etc.

A group was considered a species when 3 distinct characters were consistent.



Species Distribution Map

Flowers of new species of *Homalium* sect. *Nisa*, *H. nudiflorum* complex



Results

Homalium nudiflorum complex was split into 8 species, including 4 newly described species:

- *H. nudiflorum*
- *H. confertum*- previously synonymous
- *H. retusum*- previously synonymous
- *H. ciliolatum*- formerly subspecies
- *H. crenatifolium*- new (A)
- *H. pachycladum*- new (B)
- *H. tenue*- new (C-D)
- *H. parvibracteale*- new (E-F)

Homalium stelliferum complex has one newly described, currently unnamed species. This complex should be examined further when more material is available; observing pictures of specimens at P, there appear to be several more species within this complex.

Acknowledgements and Resources

I would like to thank Dr. Wendy Applequist for her mentorship on this project, Drs. Peter Hoch and Monica Carlsen-Krause for their guidance to the REU program, the National Science Foundation for funding, and the Missouri Botanical Garden.

Applequist, W.L. (2013). A nomenclator for *Homalium* (Salicaceae). *Skvortsovia* 1: 12-74.

Applequist, W.L. (2016a). A Revision of the Malagasy Species of *Homalium* Sect.

Eumyriantheia Warb. (Salicaceae). *Candollea* 71: 33-60.

Applequist, W.L. (2016b). A Reconsideration of the Infrageneric Classification of *Homalium* Jacq. (Salicaceae). *Candollea* 71: 231-256.

Chase, M.W., Zmarzty, S., Lledó, M.D., Wurdack, K.J., Swensen, S.M., and Fay, M.F. (2002). When in Doubt, Put It in Flacourtiaceae: A Molecular Phylogenetic Analysis Based on Plastid rbcL DNA Sequences. *Kew Bulletin* 57: 141-181.

Sleumer, H. (1973). Révision du genre *Homalium* Jacq. (Flacourtiacées) en Afrique (y compris Madagascar et les Mascareignes). *Bull. Jard. Bot. Natl.* 43: 239-328.

Madagascar template map courtesy of Wikimedia Commons

Living plant photos courtesy of Tropicos.org, Missouri Botanical Garden

