

# Native Landscapes in Urban and Suburban Environments

Kristy DeGuire, RLA  
DG2 Design  
[www.dg2design.com](http://www.dg2design.com)

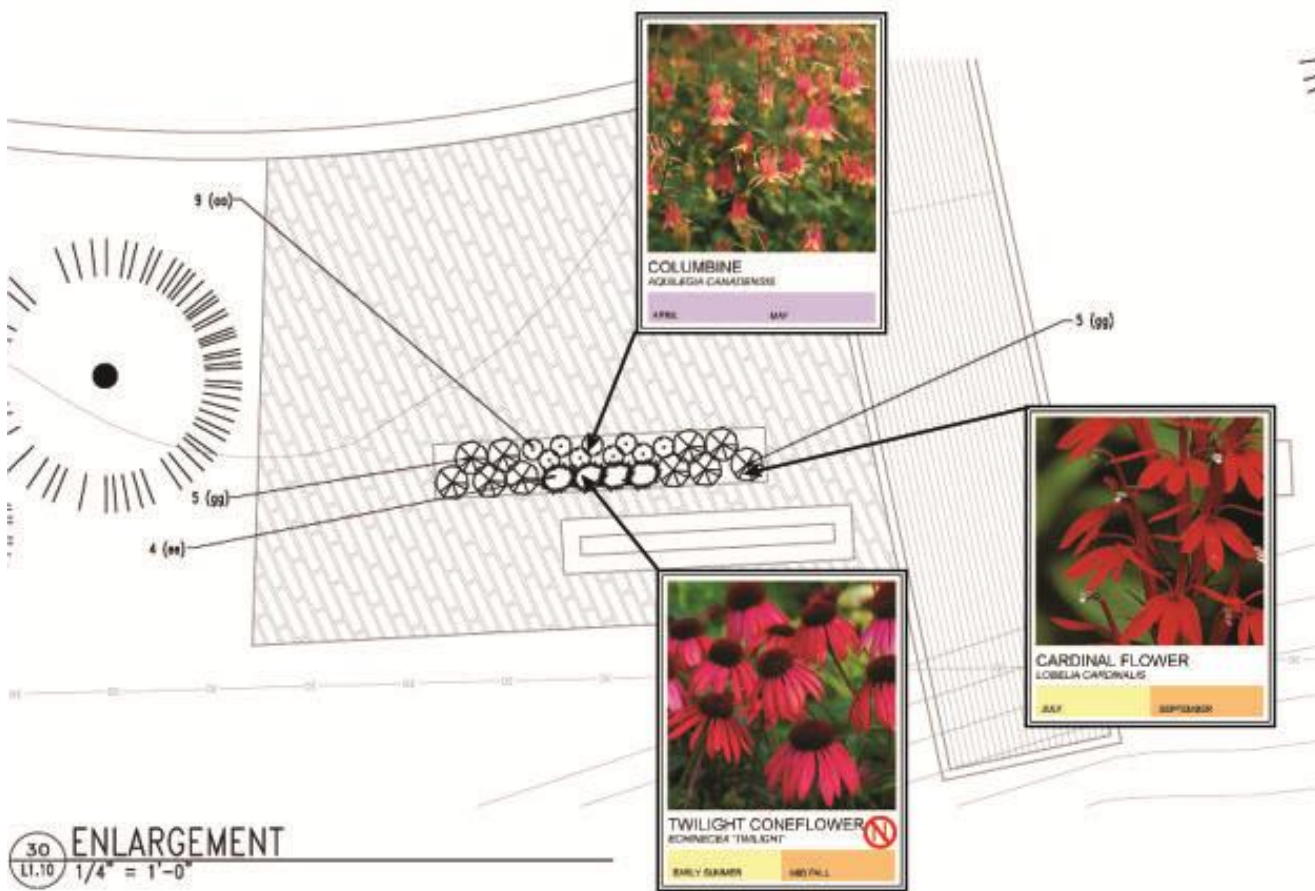




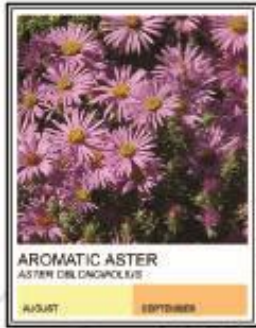




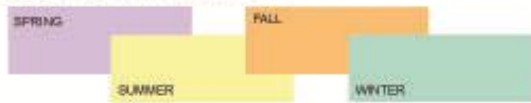




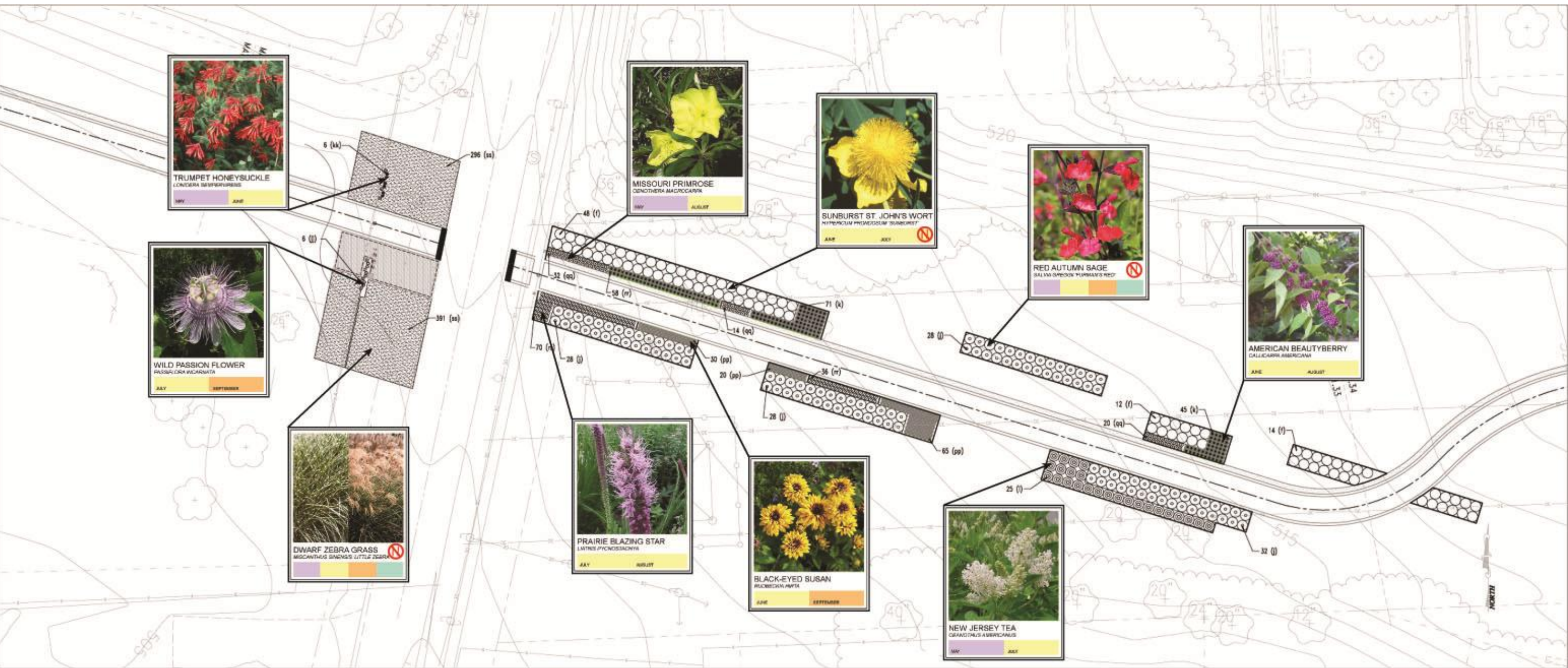




# SEASON OF INTEREST











Urban Studio Space  
Existing





Urban Studio Space  
Proposed Rain Garden





PRAIRIE DROPSEED  
*SPOROBOLUS HETEROLEPIS*

AUGUST

FALL







PRAIRIE DROPSEED  
*SPOROBOLUS HETEROLEPIS*

AUGUST

FALL



NEW ENGLAND ASTER  
*Aster Novae-angliae*

FALL

FALL







PRAIRIE DROPSEED  
*SPOROBOLUS HETEROLEPIS*

AUGUST

FALL



NEW ENGLAND ASTER  
*Aster Novae-angliae*

FALL

FALL



PALM SEDGE  
*Carex muskingumensis*

SUMMER

FALL







PRAIRIE DROPSEED  
*SPOROBOLUS HETEROLEPIS*

AUGUST

FALL



NEW ENGLAND ASTER  
*Aster Novae-angliae*

FALL

FALL



PALM SEDGE  
*Carex muskingumensis*

SUMMER

FALL



PURPLE PRAIRIE CLOVER  
*Dalea Purpurea*

SUMMER





Thank you.  
Questions?



[www.dg2design.com](http://www.dg2design.com)