

St. Louis County & Native Landscaping

Presentation to:
The Shaw Professional Landscape Series
March 13, 2012

St. Louis County's Native Landscaping Story

- Our Role Supporting Subdivision Trustees
 - Native Landscaping Initiatives
 - Parks Department Leading the Way
 - Native Landscaping Guidebook
 - Native Commons
 - Lots of Beauty
-

Supporting Subdivision Trustees

Subdivision Support

- Resource Website
- Workshops
- Publications
- Trustee Roster
- Speaker's Bureau
- Neighborhood Walks
- Problem Solving & Support



It's All About The Common Ground



Native Landscaping Initiatives

Parks Department Leads the Way



Parks & Native Landscaping

- Policy of planting natives to reduce maintenance costs
- 330+ acres in 13 parks
- Majority planted in 2005/2006



Bon Oak Park



Charrette at Lemasters Elem.

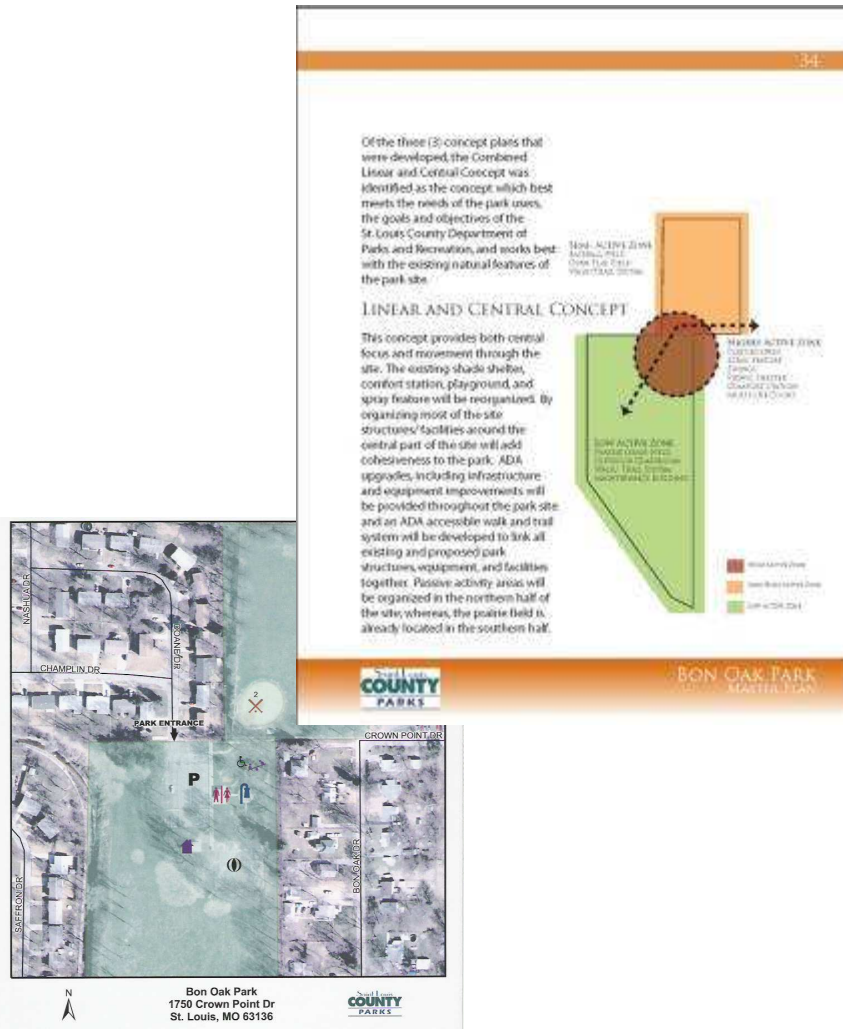


Bon Oak Park
1750 Crown Point Dr
St. Louis, MO 63136

St. Louis
COUNTY
PARKS



Bon Oak Master Plan



CONCEPTUAL MASTER PLAN

PHASE 1

- A. New Main Walk (1st Half)
- B. New Pedestrian Node
- C. New Children's Playground (Ages 5-12)

PHASE 2

- D. New Tot Playground (Ages 2-5)
- E. New Main Walk (2nd Half)
- F. New Comfort Station
- G. New Walk Near Comfort Station
- H. Improved Parking Area
- I. New Entry Plaza

PHASE 3

- J. New Picnic Shelter
- K. New Signage
- L. New Swings
- M. New Walk/Trail System
- N. Improved Baseball Field
- O. New Outdoor Classroom
- P. Improved Maintenance Buildings
- Q. New Spray Features
- R. New North Connection

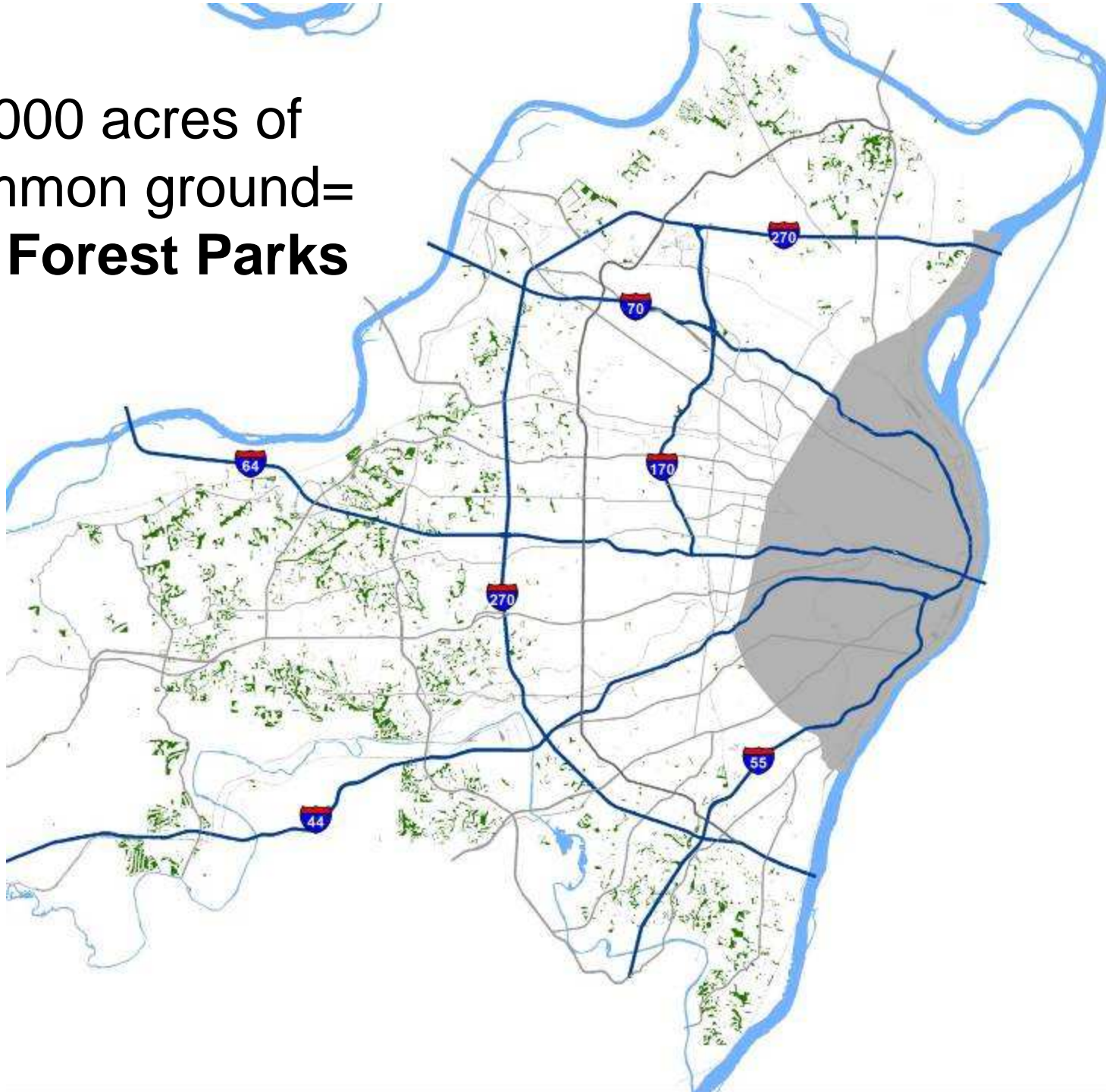
Bon Oak Improvements



Native Landscaping Guidebook



11,000 acres of
common ground=
8.5 Forest Parks













**POSTED
PRIVATE
LAKE**
NO SWIMMING
NO BOATING
FISHING FOR
RESIDENTS ONLY

**NO
TRESPASSING
RESIDENTS
ONLY**

ORD. 716.150

CURFEW HOURS
SUNDAY - THURS.

11:00 P.M. - 6:00 A.M.

FRI. - SAT.

12:00 P.M. - 6:00 A.M.

ORD. NO. 705.010

POLICE WILL TAKE
VIOLATORS IN
CUSTODY



Native Landscaping Guidebook

- Goal: reduce maintenance costs
- Our Approach
 - Planning, not technical
 - Customized for subdivision associations



Native Landscaping Guidebook

- Partners
 - Other St. Louis County departments
 - Missouri Department of Conservation
 - Contractors
 - Local Native Landscaping Advocates
 - Subdivision trustees



Native Landscaping Guidebook

- Format
 - Education
 - Step-by-step process
 - Resources
- Graphically compelling
 - Graphs, diagrams, case studies, timelines and lots of pictures



GOING NATIVE SAVES MONEY

Replacing turf with native prairie plants makes financial sense for one reason—it costs half as much to maintain a prairie. Although prairie installation takes initial up-front costs, the return on investment is usually met within three to five years.

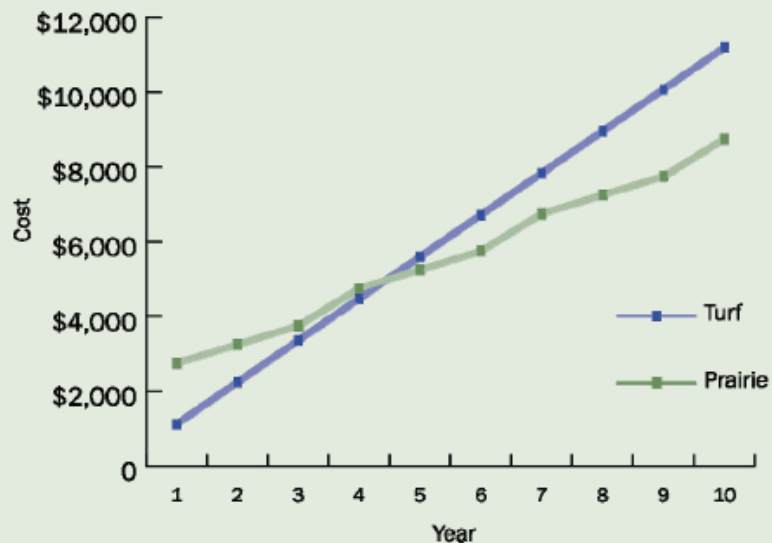
Total savings in maintenance costs can range between 10 and 30 percent over a ten-year period. A larger prairie will require a larger initial investment but will increase savings in the long run.

AVERAGE FIXED COSTS PER ACRE

Annual turf maintenance	\$1,120
New prairie installation	\$2,500
First-year prairie maintenance	\$1,500
Annual prairie maintenance	\$500
Controlled burning	\$1,000

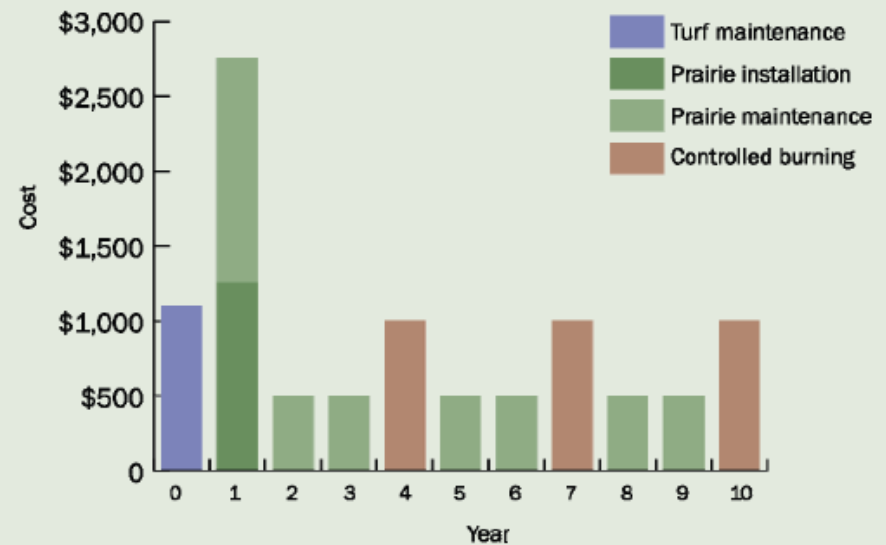
Source: DJM Ecological services

RETURN ON INVESTMENT—1 ACRE PRAIRIE



Return on investment is met in year four when the cumulative costs to maintain turf exceed the costs of prairie installation and maintenance.

COST BREAKDOWN—1 ACRE PRAIRIE



After the initial investment in year one to install the new prairie, annual maintenance costs are much lower than the previous turf maintenance costs.

Note: costs are calculated assuming 50 percent cost-share from the Missouri Department of Conservation. See page 21 for more information.



SAMPLE PROJECT SCHEDULE

	PLANNING	YEAR 1	YEAR 2	YEAR 3
	Summer Fall Winter Spring	Summer Fall Winter Spring	Summer Fall Winter Spring	Summer Fall Winter Spring
PLANNING PROCESS				
Organize	x			
Evaluate the site		x		
Estimate your budget		x		
Research financing		x		
Get resident input			x	
Develop a conceptual plan			x	
Sell the plan				x
Select a contractor				x
PROJECT EXECUTION				
Apply herbicide to kill unwanted vegetation		x	x	
Mix and sow seed			x	
Seed germinates			x	
Mow weeds			x	x
Spot spray herbicide if needed			x	x
Reseed to ensure thick growth				x
Conduct a controlled burn*				x







Native Landscaping Guidebook

- Getting the word out
 - tinyurl.com/NativeLandscapingGuide
 - Distributed to project stakeholders
 - Direct mailing, distributed at town halls, vendor fairs, community meetings
 - Brown bag lunch
-

Implementation



The Native Commons

- \$10,000 demonstration project
- Partnership with MDC
- Purpose
 - Success on the ground
 - Learning experience
 - Generate interest, get partners on board
 - Success to point other subdivisions to



The Native Commons

- Applications
- Selection process
 - Financial capacity
 - Potential environmental impact
 - Volunteer support/partnerships
 - Visibility/outreach potential



The Native Commons

Timeline	
April	Select subdivision
May	Initial meeting with trustees and subdivision
June	Pre-installation BioBlitz and site analysis
September	Presentation of native landscaping plan
October	Site preparation
December	Planting
2013 & 2014	Monitoring, meetings as needed
2015	Post-installation BioBlitz

- Follow our progress
 - tinyurl.com/NativeCommons
-

Lots of Beauty

- The need
 - Public Works demolishes dilapidated structures and maintains county-owned land
 - Maintenance is an ongoing issue
 - Goal to cut spending by mowing less



Lots of Beauty

- The project
 - Demolition of 5 vacant properties
 - Integrated native planting into demolition bids
 - Seeds sown in February, 2012
 - Education/outreach
- Potential for future projects



Thank You

Justin Carney

jcarney@stlouisco.com | 314-615-3840

Louis Clayton

lclayton@stlouisco.com | 314-615-2529

On the web:

Stlouisco.com/plan

Facebook.com/stlouisco.plan