

# The Shaw Professional Landscape Series

Establishing A Low Maintenance  
Landscape For A Client





SSM St. Clare  
Health Center

The sign is a large, grey, rectangular structure with a blue triangular base. It features a green logo at the top, followed by the text 'SSM St. Clare' in green and 'Health Center' in grey. A horizontal band across the middle contains the word 'EMERGENCY' in red. The sign is situated behind a landscaped area with tall grass and shrubs, with a paved road in the foreground.

**EMERGENCY**























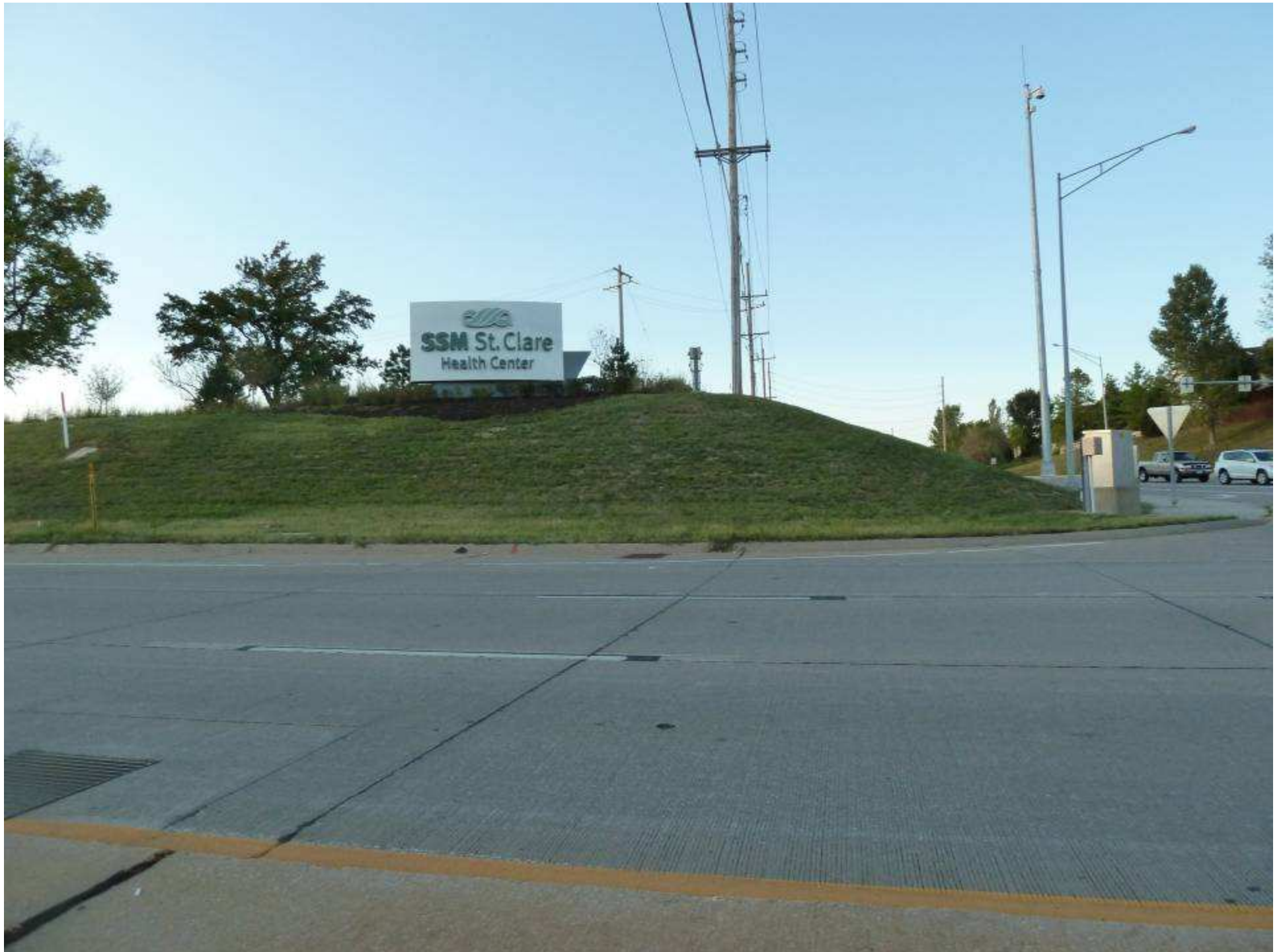




















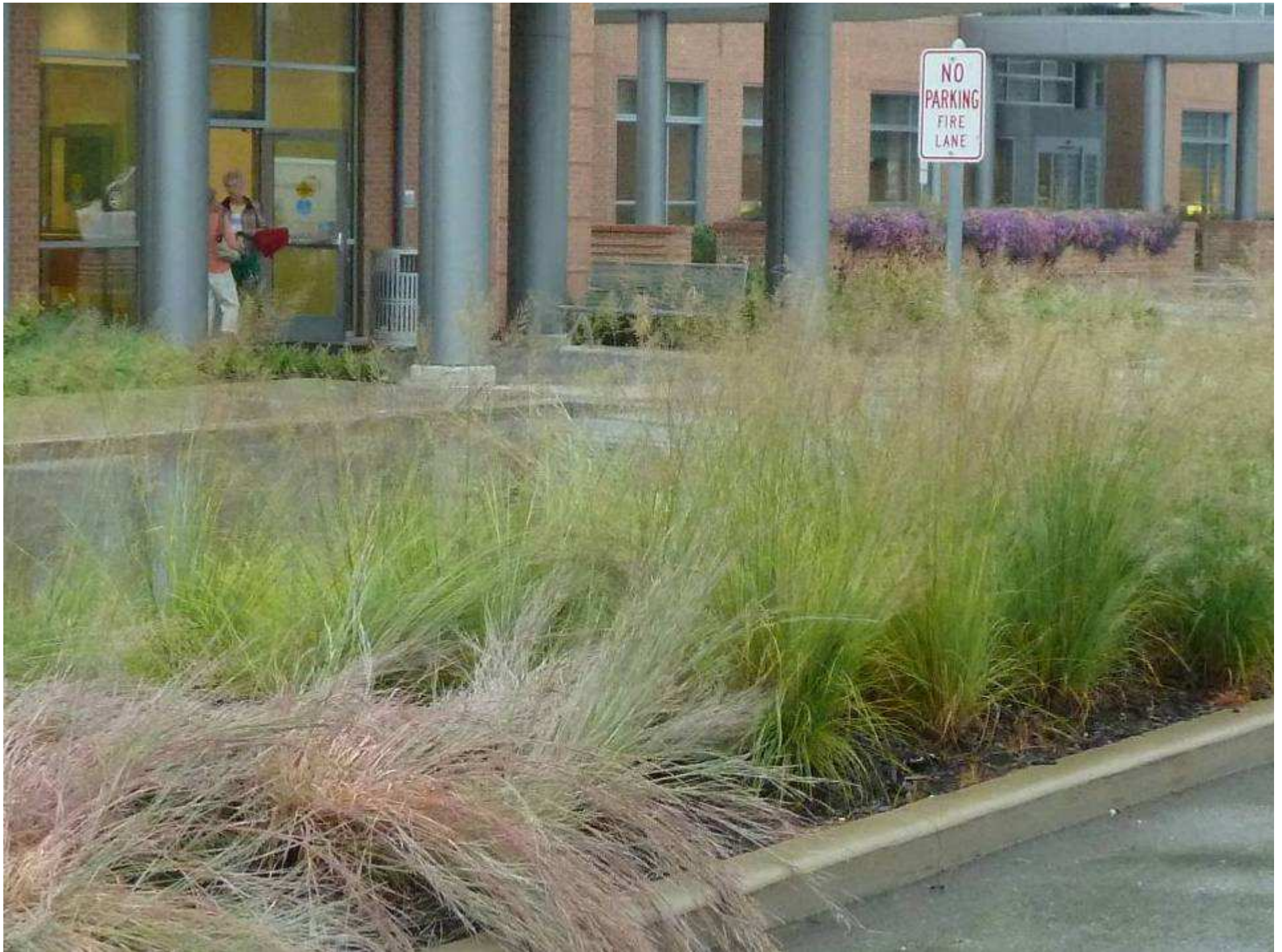














































# THANK YOU!

## SIMON BARKER

NATIVE LANDSCAPE SOLUTIONS, Inc.

Cell 636 373 1174

[www.nativelandscape.biz](http://www.nativelandscape.biz)

