

Metropolitan St. Louis Sewer District and Green Infrastructure



Susan McCrary, P.E.

Jay Hoskins, P.E.



PRIORITIES
PERFORMANCE
SERVICE





The Metropolitan St. Louis Sewer District

COMBINED AND SEPARATE SEWER AREAS



Separated/ Combined Sewer Areas



MSD's Green Infrastructure Program for CSO Volume Reduction

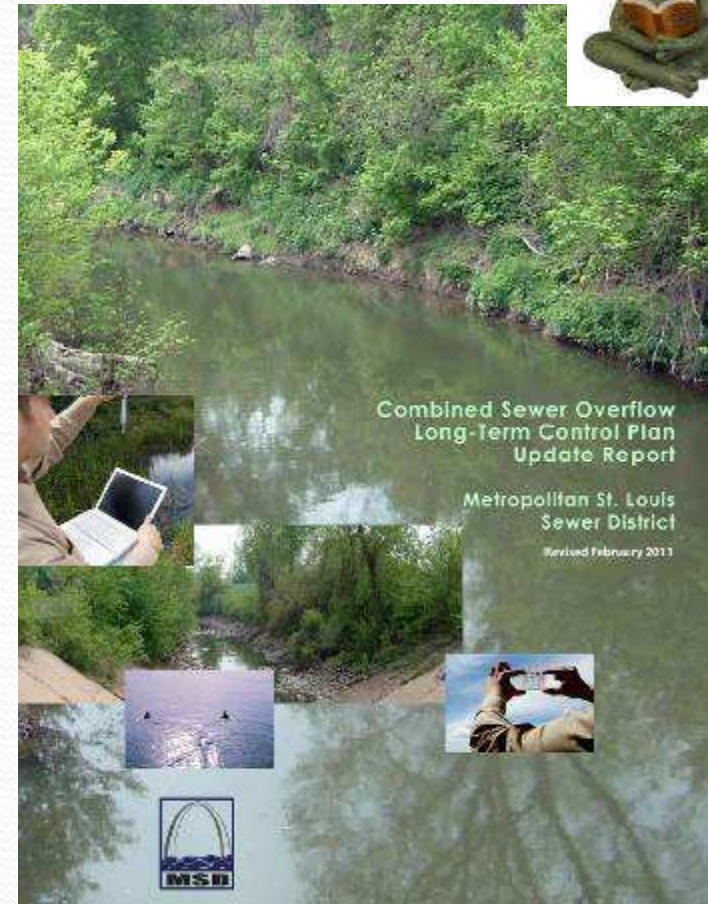


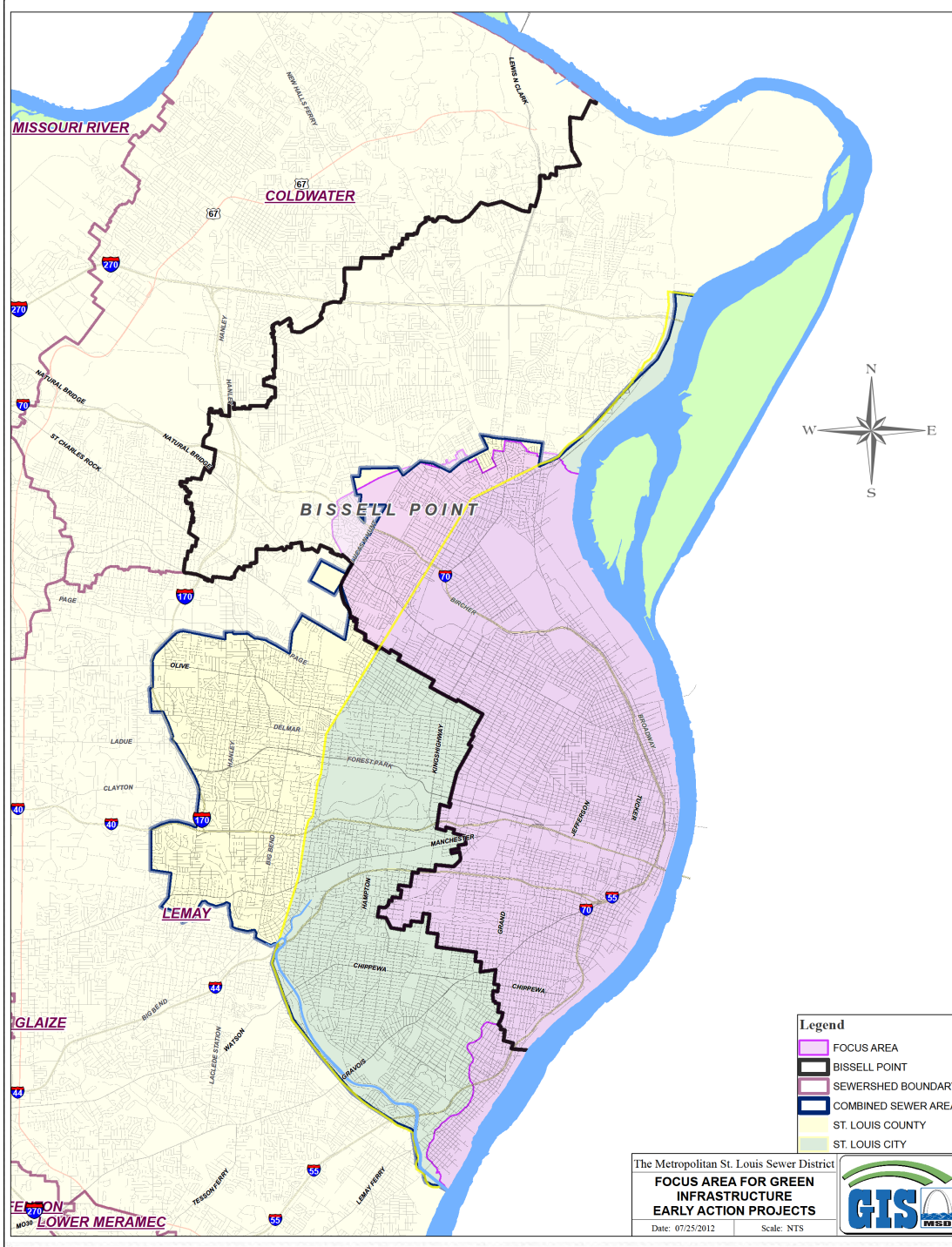
MSD's Long Term Control Plan (LTCP)

- Plan to address combined sewer overflows (CSOs)
- www.stlmsd.com

Green Infrastructure Program details:

- Chapter 12
- Appendix Q





Green Infrastructure Program

- \$100 Million
- 23 years
- Area that flows to CSO's along the Mississippi River
- Bissell Point service area
- Mostly within the City of St. Louis



Pilot Program

- First \$3 Million
- First 5 years (2011-2015)
- Demonstration Projects
- Monitoring
- Education/Outreach
- Develop plan for Full GI Program
- Final Report



CSO VOLUME REDUCTION - GREEN INFRASTRUCTURE (Pilot Program)

(Project #11048)

Concept Schematic



- Legend**
- Demolished Structures
 - Green Infrastructure
 - LRA Owned Parcel
 - Parcels

SCALE: 1" = 50'



How's it going so far?



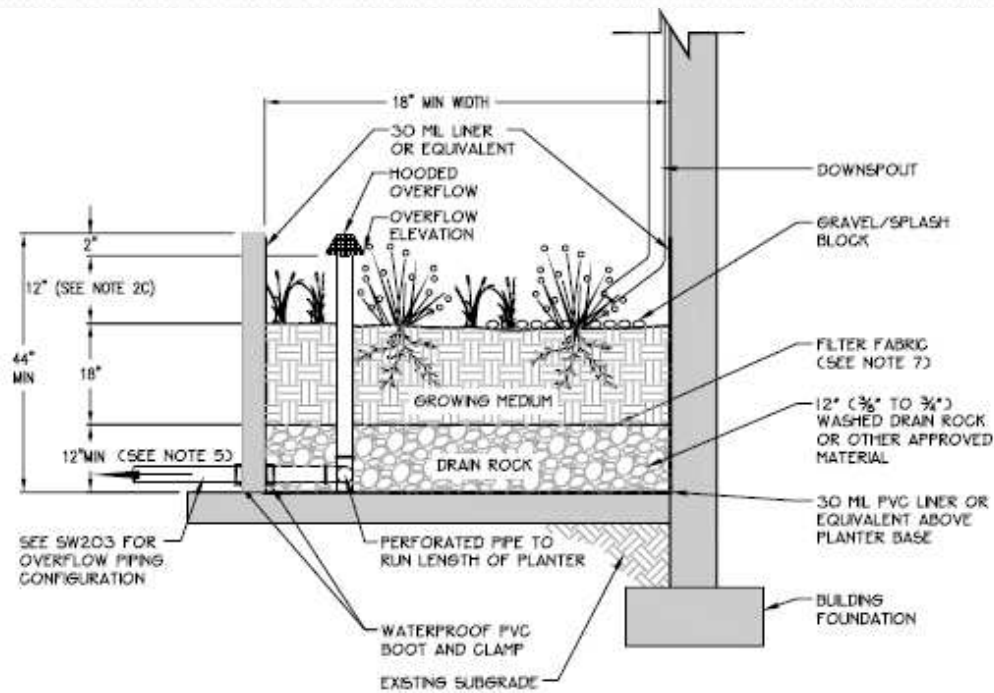
Demolitions
completed
by LRA

- 220 parcels
- 222 buildings
- Removed 10 acres impervious surface



Site Scale Projects

Habitat for Humanity Planter Boxes



Site Scale Projects

Individual Raingardens

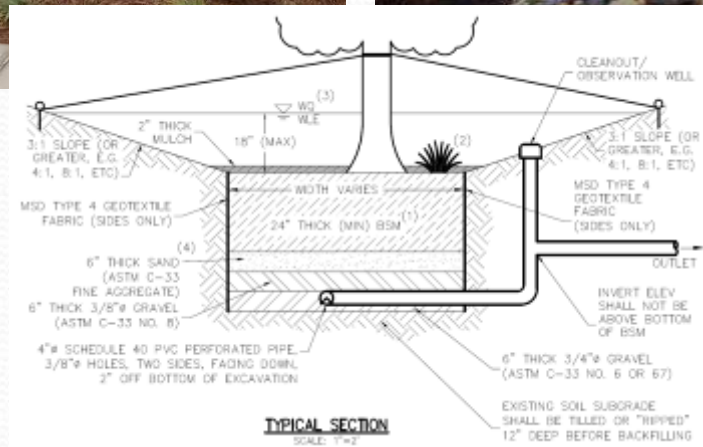


Amended Soil



Neighborhood Scale Projects

#1323 Clinton Bioretention
Under Construction



Pilot Program Schedule



2013
Construction
Complete

Monitoring
and
Outreach

Full Program
Development

2015 Pilot
Program
Report

Full GI Program



“Early Action” projects:

- Good opportunities for partnership prior to pilot program completion
- Must be approved by EPA
- First group sent to EPA in December
- Next application period August 1 – October 31, 2013

Questions?

- smccrary@stlmsd.com
- jshosk@stlmsd.com



Thank
You!

