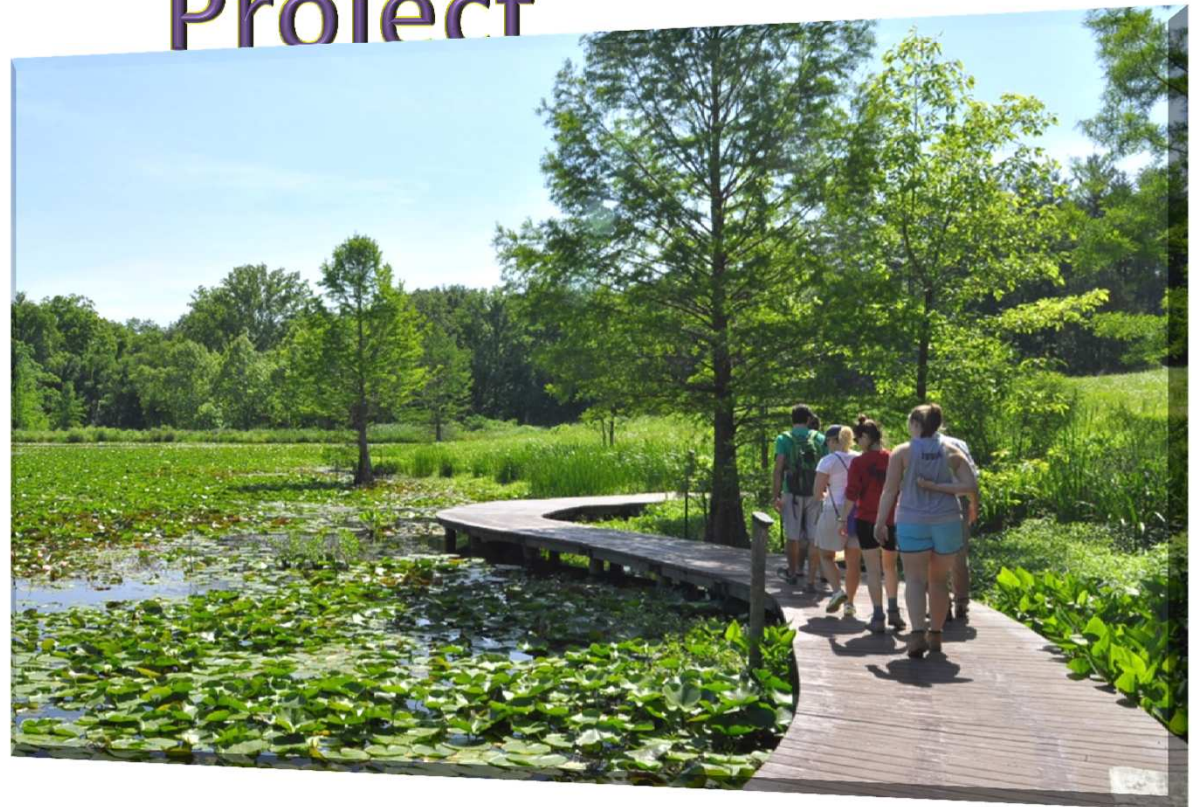


The Webster University “Natural Area” Project



June 2012



Mission

The “Natural Area” of campus is unusual - it used to be a true forested area of Webster Groves. It is Webster University’s only possibility of a wildlife area and has the capacity of becoming an example of biodiversity and sustainability on our campus. We see this area being used as a focal point for the Webster Community in the following ways;

1. **Research:** Biological, Ecological, Natural History
2. **Education:** Cross-Curriculum use, Observation, Sustainability and Independent Study Projects
3. **Recreation:** Relaxation and enjoyment of wildlife for students, the University Community, and Webster Community

It also serves as Bio-Retention and Filtration of storm water from campus collection of rainfall - a true “Rain Garden”, wildlife attraction, and highlighting the Webster University World Main Campus in St. Louis, Missouri

Webster University “Natural Area” is a Restoration Ecology Project

We propose to restore this remnant forested area to a
Wetland Forested “Natural Area”.



History

1990



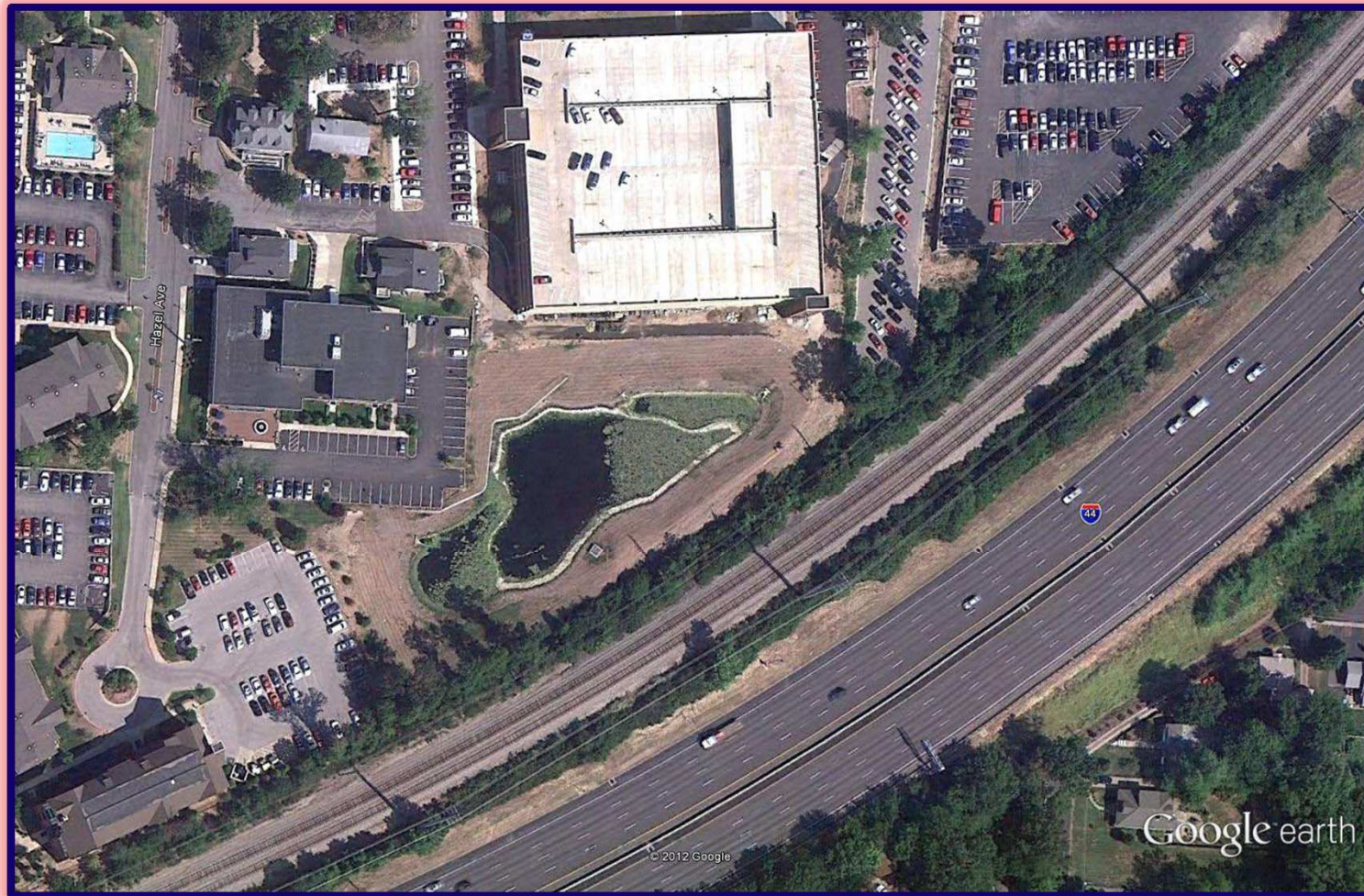
History

1996



History

2011



Webster University “Natural Area”

Consists of several restored Native Missouri Habitats

1. Upland Forest
2. Forested Fen
3. Prairie/ Meadow
4. Wetland
5. Aquatic



Human Use Areas

- A. Education Pavilion and Platform
- B. Research/ Storage Shed Area
- C. Stationary Overlook Dock
- D. Covered Research Platform and Floating Research Dock
- E. Gravel/ Chat Pathways
- F. Recreational Deck and Seating Area



Timeline 2012 - 2013

Summer 2012

1. Solar Aerator/Bubbler
2. Lilly Pad Forebay planting
3. Work Study Students/ Maintenance - ongoing
4. Monitoring the "Natural Area" – ongoing

Fall 2012

1. Tree and Shrub Planting – coordinate with Webster Works World Wide and Arbor day
2. Research Shed construction and Solar Panels on Roof
3. Education Pavilion Construction
4. Floating Research Dock
5. Install Signage
6. Recycling Bins
7. Work Study Students/ Maintenance - ongoing
8. Monitoring the "Natural Area" – ongoing

Winter 2012-2013

1. Finish construction of structures and hardscape – Recreation Deck and Amphitheater Area, Boardwalk, Education Pavilion, Stationary Overlook Deck, Chat Pathway, and Lighting
2. Work Study Students/ Maintenance - ongoing
3. Monitoring the "Natural Area" – ongoing

Spring 2013

1. Aquatics, Forbs, and Native Grasses planting
2. Seeding and establishment of Meadows and Prairie
3. Continue Tree and Shrub planting
4. Work Study Students/ Maintenance - ongoing
5. Monitoring the "Natural Area" – ongoing

Summer 2013

1. Work Study Students/ Maintenance - ongoing
2. Monitoring the "Natural Area" – ongoing

Fall 2013

1. Work Study Students/ Maintenance - ongoing
2. Monitoring the "Natural Area" – ongoing

June 7, 2012

Proposed Development of a Master Site Plan for Water Run-Off

