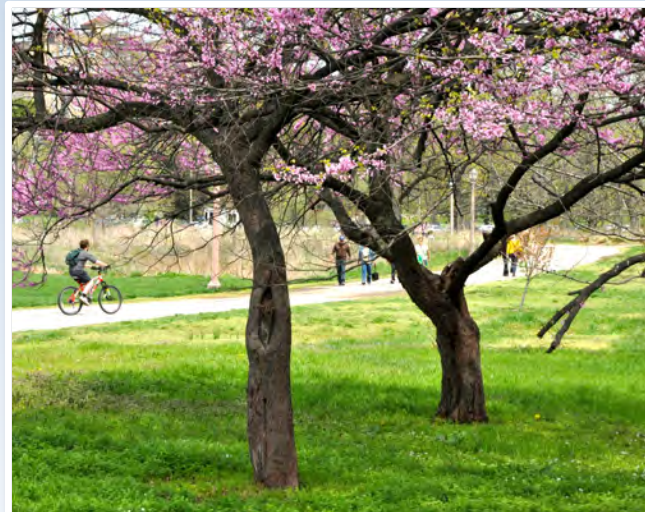
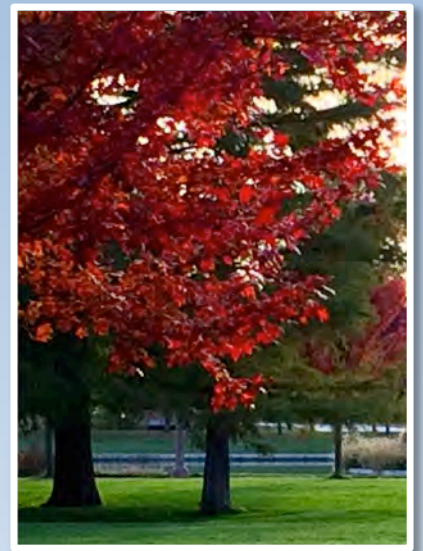


City of St. Louis Urban Vitality & Ecology Initiative



Catherine L. Werner
Sustainability Director
Office of the Mayor
April 2015



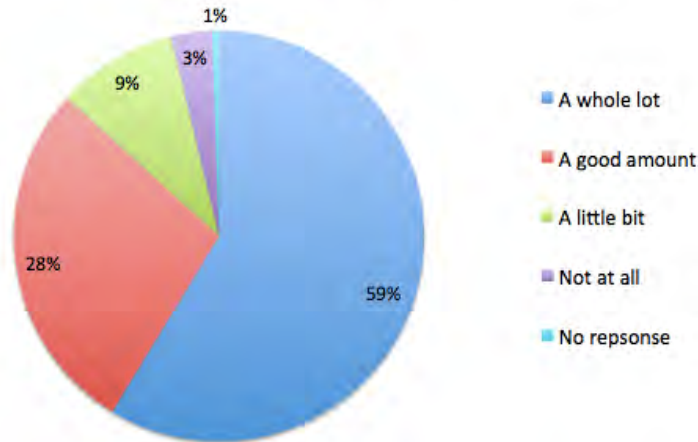
Sustaining the Tree (Nature needs people...)



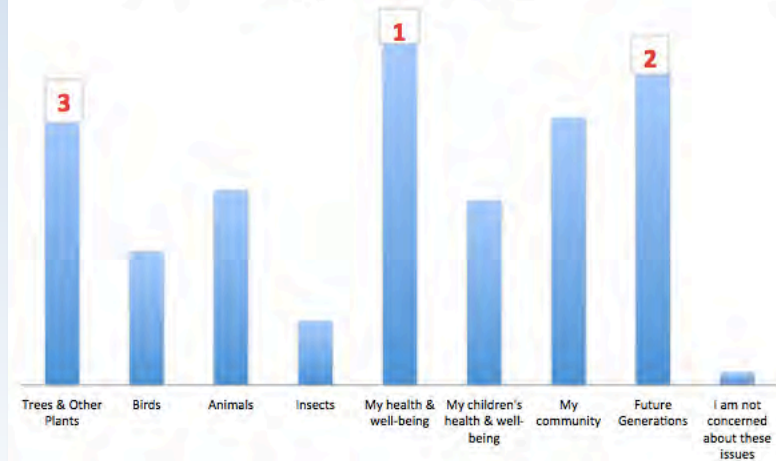
Sustaining the Boy (...People need nature)



Living close to quality outdoor green spaces is important to me...



I am concerned about ecology and environmental issues because of the impact on...

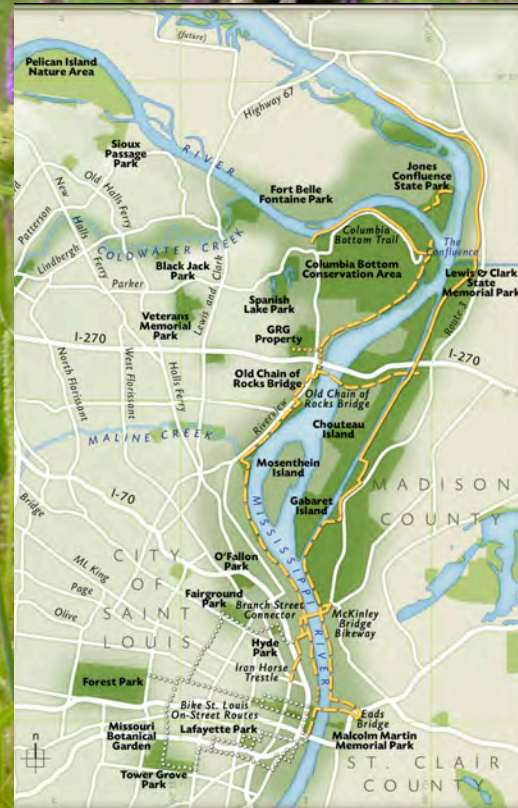


St. Louis City Natural Heritage

EARLY PRAIRIES of ST. LOUIS CITY

COMMONFIELDS
1 Prairie de St Louis
2 La Grande Prairie
3 Prairie des Neiges
4 Prairie a Catalan
5 Côté de Sac

COMMONS (PASTURE)
A St. Louis Commons
B La Petite Prairie
C Carondelet Commons

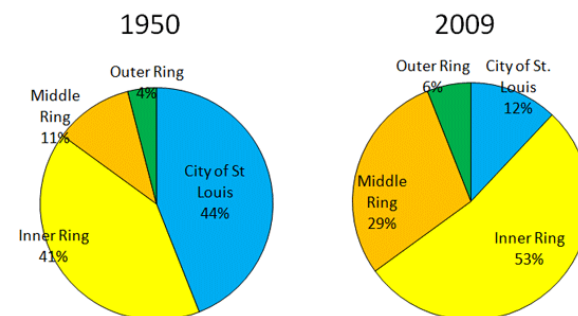


St. Louis City Density

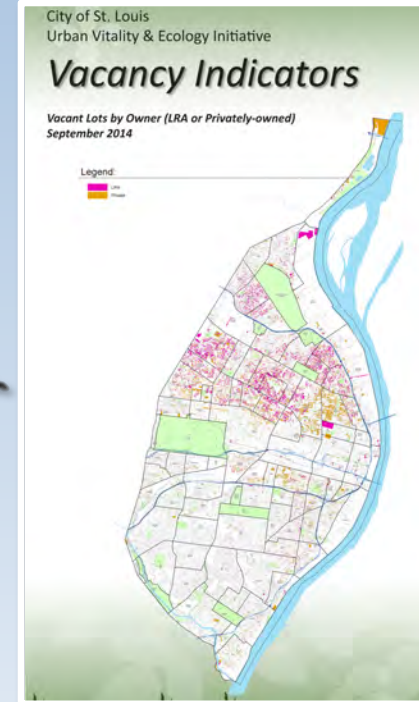


Year	St. Louis City
1880	350,518
1890	451,770
1900	575,238
1910	687,029
1920	772,897
1930	821,960
1940	816,048
1950	856,796
1960	750,026
1970	622,236
1980	453,085
1990	396,685
2000	348,189
2010	319,294

Distribution of Population
ST. LOUIS METROPOLITAN REGION: 1950-2009

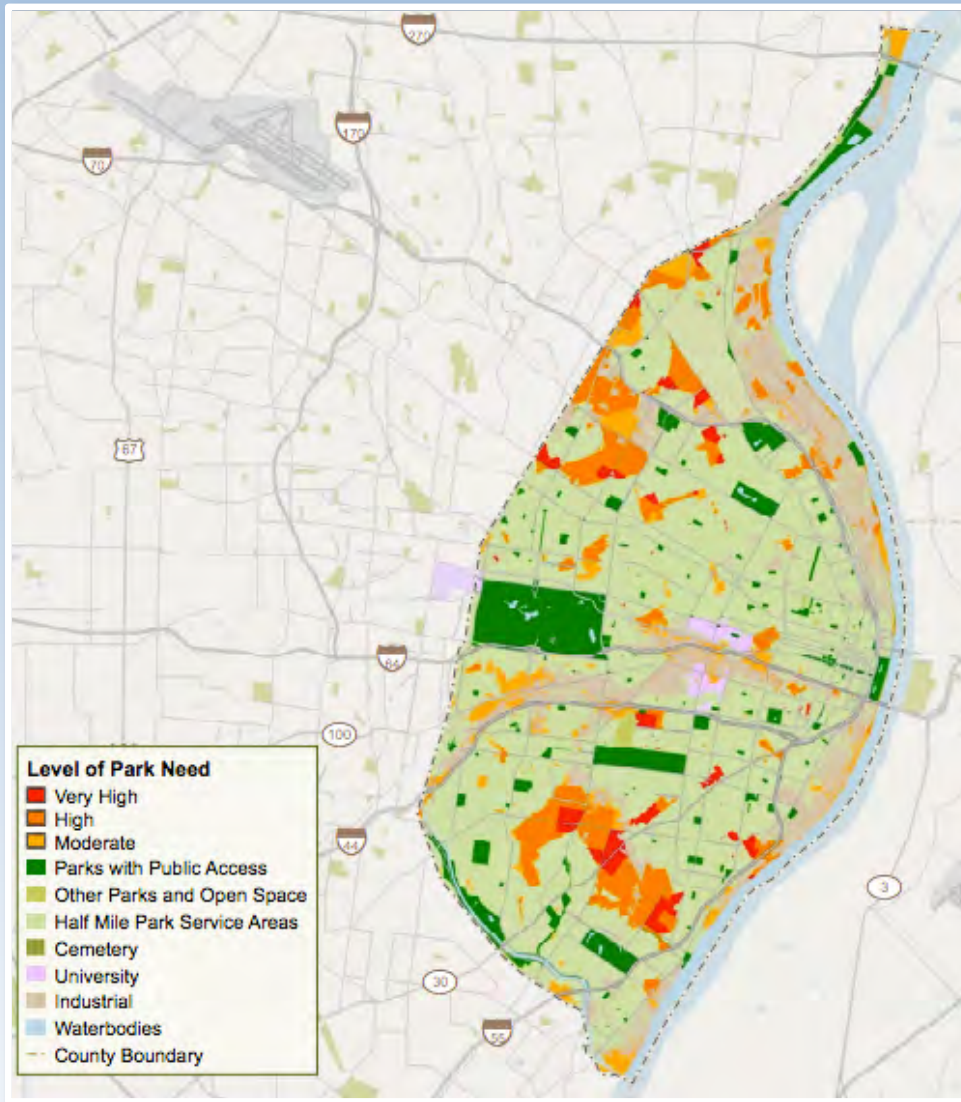


Current challenges / Present opportunities



Assets On Which to Build:

- Natural heritage
- 111 City parks
- Regional trail system
- Historic buildings
- Strong neighborhoods
- Partnership efforts
- Stakeholder resources





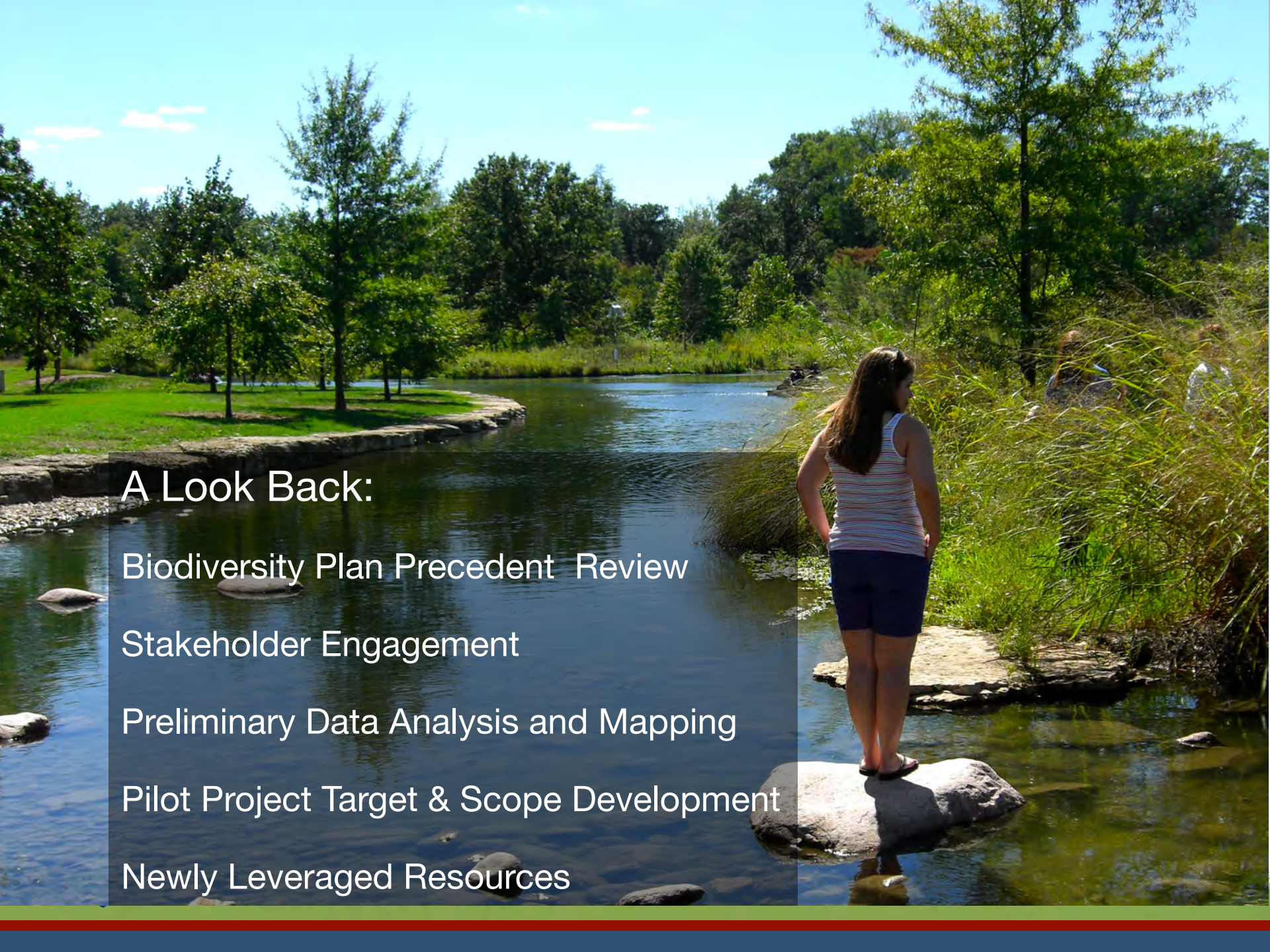
Goals of the Urban Vitality & Ecology Initiative:

- Advance triple bottom line sustainability: improve economic, social and environmental conditions
- Capitalize on existing City assets while addressing challenges
- Identify synergistic opportunities to leverage resources and achieve shared priorities with greater impact



Cultivating Opportunities



A woman with long brown hair, wearing a striped tank top and dark shorts, stands on a large rock in a pond. She is looking towards a list of project milestones on the left. The pond is surrounded by lush green trees and grass. The sky is blue with a few clouds. The list of milestones is overlaid on a semi-transparent dark rectangle.

A Look Back:

Biodiversity Plan Precedent Review

Stakeholder Engagement

Preliminary Data Analysis and Mapping

Pilot Project Target & Scope Development

Newly Leveraged Resources

A Look Ahead:

Pilot Project Implementation

Additional Community Engagement

Urban Biodiversity Database & Atlas

Strategic Action Plan Partners/Resources

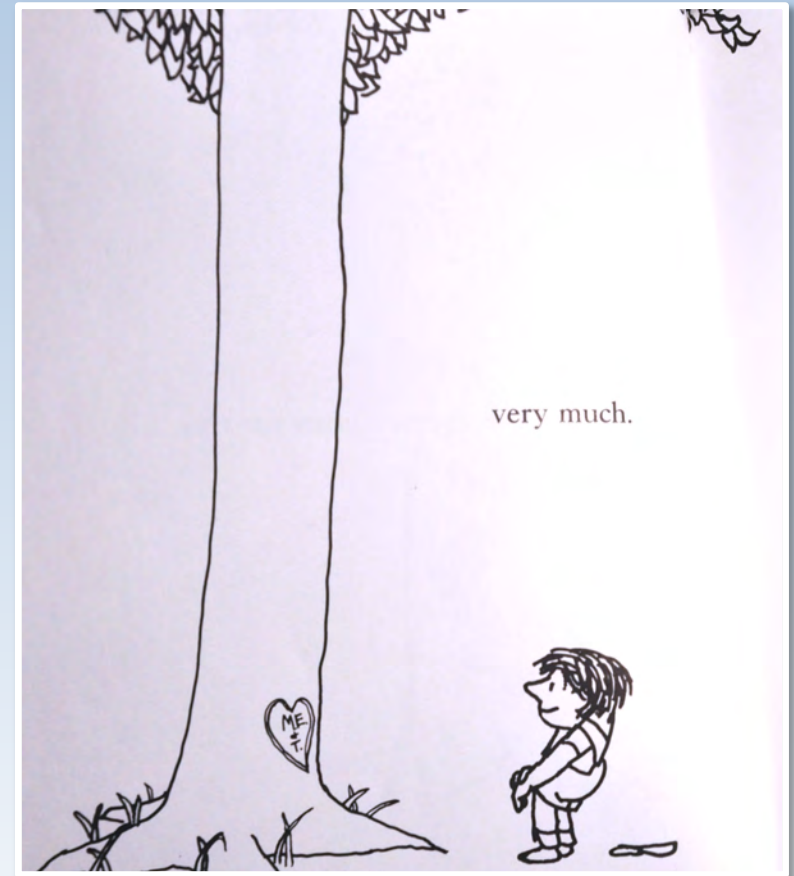


Lessons Learned



Moral Of The Story:

- The more you give, the more you have
- It's better to give than receive
- You have three choices in life: give up, give in or give it your all
- Help sustain the tree, and let the tree sustain you...





Catherine L. Werner
Sustainability Director
City of St. Louis Mayor's Office
wernerc@stlouis-mo.gov
stlouis-mo.gov/sustainability

We are Sustainable



MISSOURI
BOTANICAL
GARDEN

