

BIODIVERSITY

FOR A

BETTER WORLD

Wild Ideas Worth Sharing

St. Louis, MO • April 26–May 1, 2015

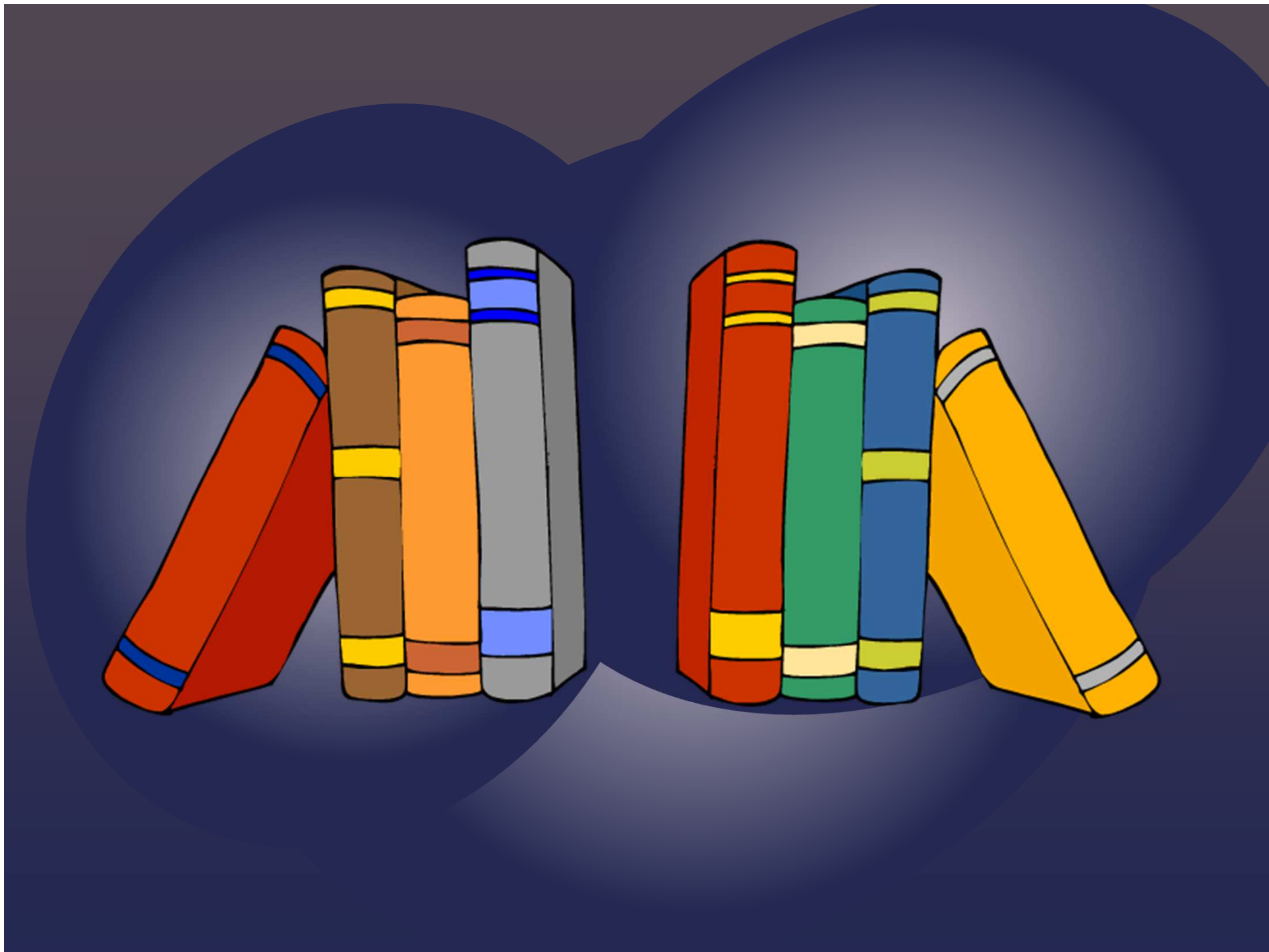
BGCI's 9th International Congress on
Education in Botanic Gardens

 MISSOURI
BOTANICAL
GARDEN

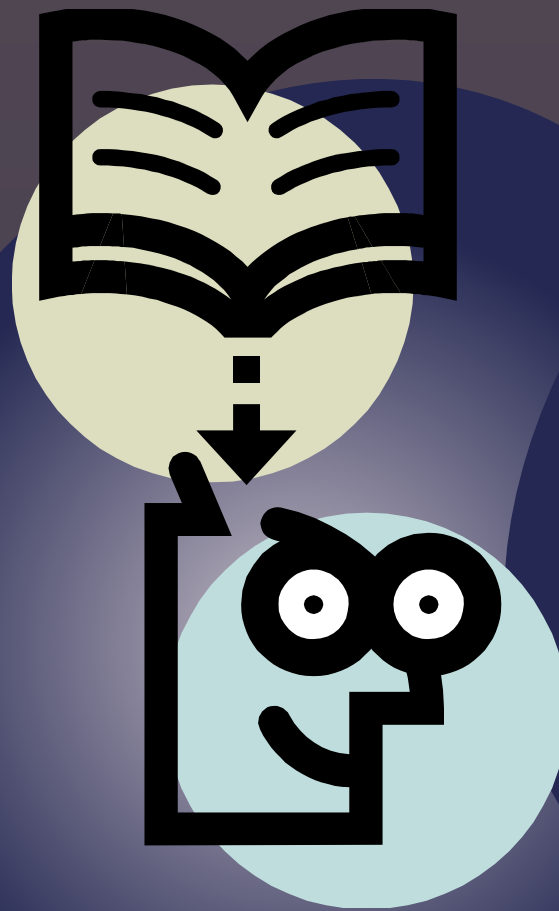
 **BGCI**
Plants for the Planet

Learning about learning in botanical gardens

The importance and value of research and
evaluation







Some of what we
know...

Included

Inspired

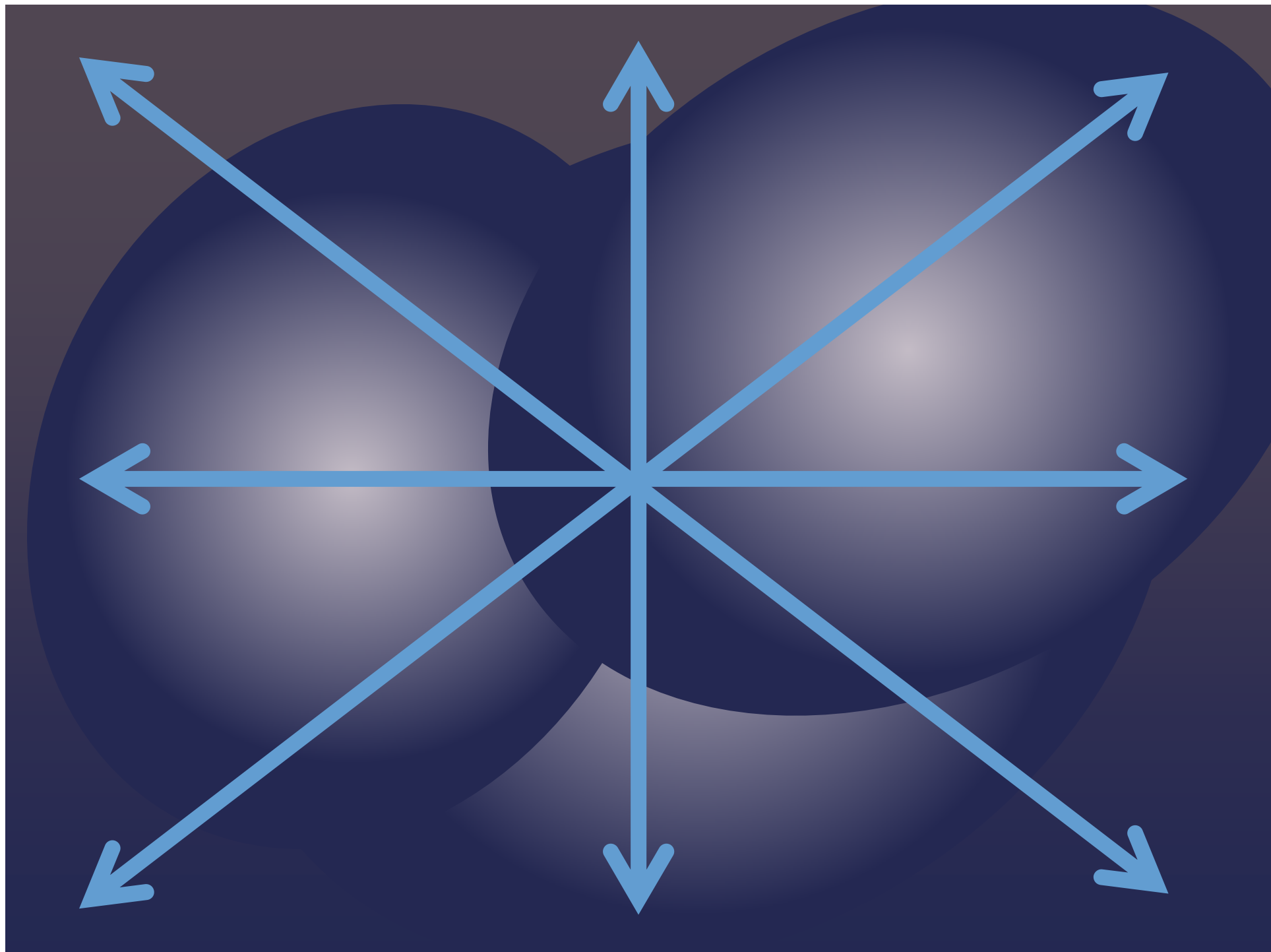
Involved





Data Structure Action





A word cloud featuring various roles and identities, arranged in a triangular shape on a black background. The words are in different colors and sizes, creating a dynamic visual effect. The roles include:

- Teacher
- Museum Goer
- Relative
- Parent
- Gardener
- Religious/spiritual
- Professional
- Friend
- Expert
- Sibling
- Performer
- Reader
- Colleague
- Learner
- Cook
- Sports Fan
- Musician
- Child





Research & Evaluation



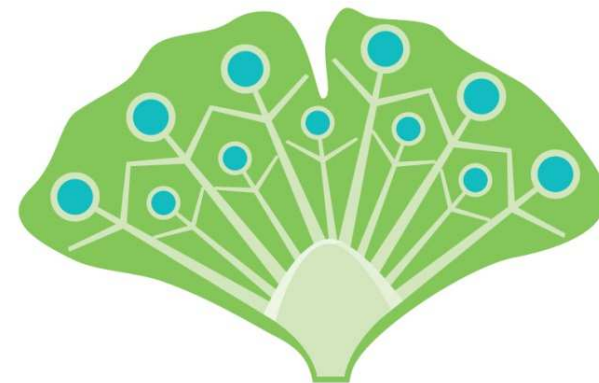
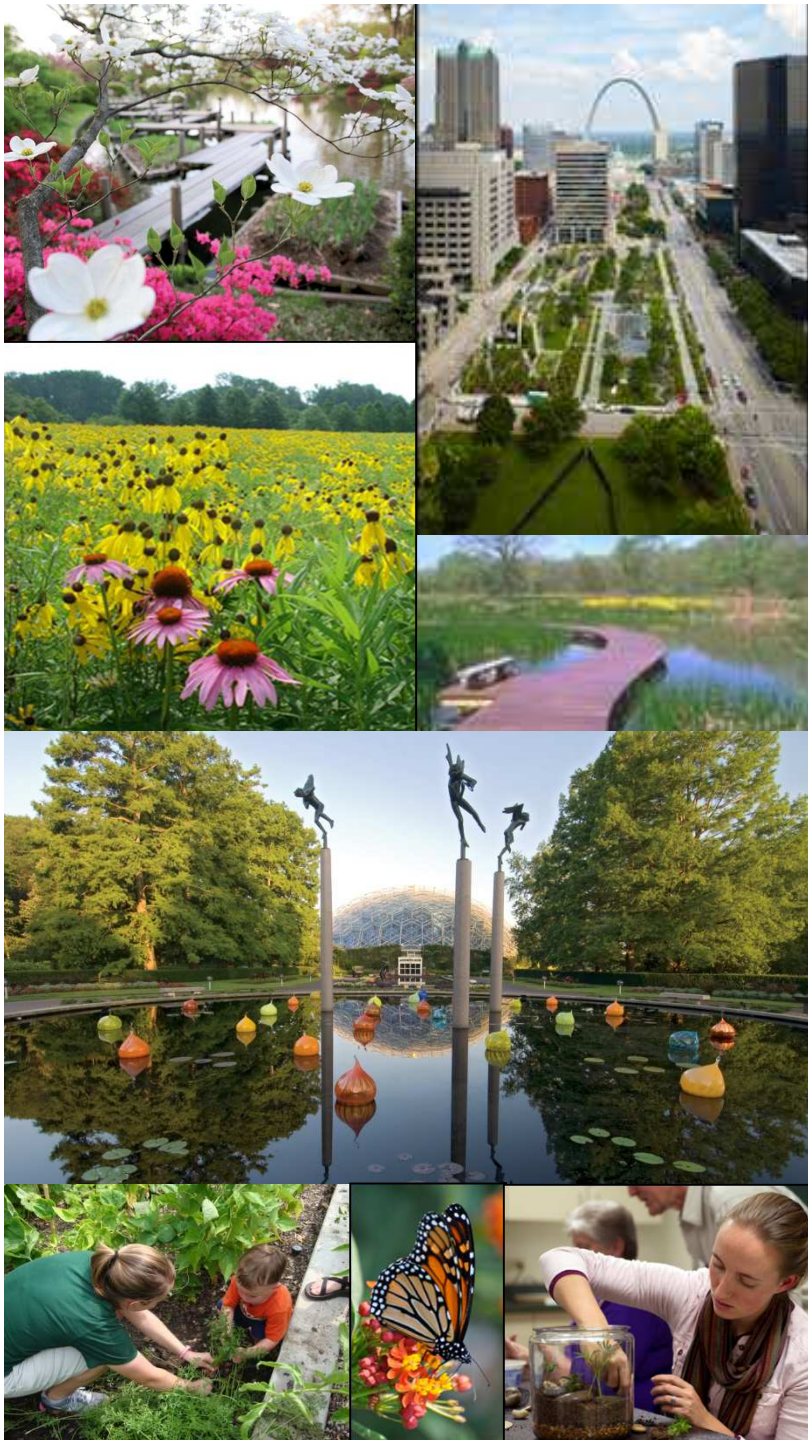


Planting
some
questions



Thanks!

Jheimlich@cosi.org



BIODIVERSITY

FOR A

BETTER WORLD

Wild Ideas Worth Sharing

St. Louis, MO • April 26–May 1, 2015

BGCI's 9th International Congress on
Education in Botanic Gardens

 MISSOURI
BOTANICAL
GARDEN


BGCI
Plants for the Planet