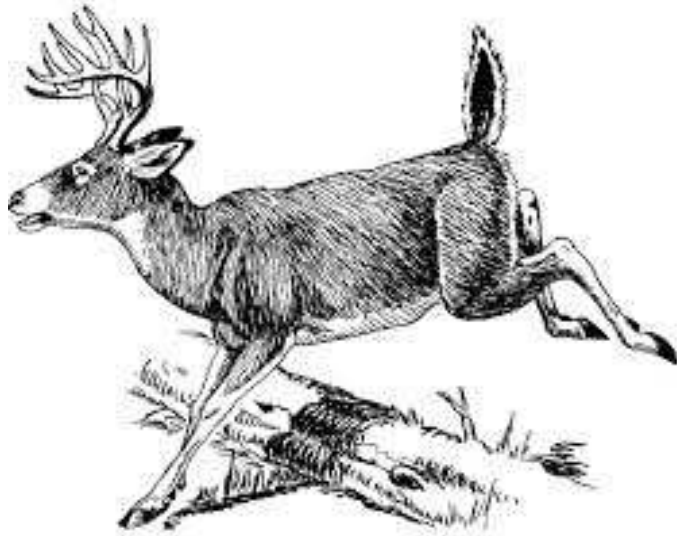


Deer Resistant Native Plants

These plants were found to resist deer brows during a three year study in Wildwood Missouri. Overall, deer tend to avoid plants that have hairy leaves, thorns, or strong smells. However, deer will eat anything when they get hungry enough.



Ferns, Grasses, Sedges, and Rushes:

Adiantum pedatum (maidenhair fern)
Andropogon gerardii (big bluestem)
Carex annectens (yellowfruit sedge)
Carex muskingumensis (palm sedge)
Carex stricta (tussock sedge)
Juncus effusus (soft rush)
Onoclea sensibilis (sensitive fern)
Panicum virgatum (switchgrass)
Polystichum acrostichoides (Christmas fern)
Schizachyrium scoparium (little bluestem)
Sporobolus heterolepis (prairie dropseed)

Forbs:

Achillea millefolium (yarrow)
Agastache nepetoides (giant hyssop)
Allium stellatum (fall glade onion)
Amsonia ciliata (feathery blue star)
Amsonia illustris (shining blue star)
Asclepias incarnata (swamp milkweed)
Asclepias viridis (spider milkweed)
Coreopsis tinctoria (plains coreopsis)
Delphinium exaltatum (tall larkspur)
Eryngium yuccifolium (rattlesnake master)
Erysimum capitatum (western wallflower)
Helenium autumnale (autumn sneezeweed)
Hibiscus lasiocarpus (woolly rose mallow)
Iris cristata (dwarf crested iris)
Iris virginica (blue flag iris)
Monarda bradburiana (bradbury beebalm)
Palafoxia callosa (palafoxia)
Physostegia virginiana (obedient plant)
Pycnanthemum pilosum (hairy mountain mint)
Pycnanthemum tenuifolium (slender mountain mint)
Pycnanthemum virginianum (mountain mint)
Salvia azurea (blue salvia)
Scutellaria incana (hoary skullcap)
Scutellaria ovata (heart-leaved skullcap)
Sedum ternatum (wild stonecrop)
Senecio obovatus (round-leaved groundsel)
Senna marilandica (wild senna)
Verbena canadensis (rose verbena)
Verbesina helianthoides (yellow wingstem)